

LEAFLET

Industrial plugs and sockets

For reefer containers



On refrigerator (reefer) containers, industrial plugs and sockets are tested to their extremes. On ships and in harbor terminals, power loss spells disaster. Refrigerator ships are used to transport goods that require temperature regulations, mainly food, in special containers. To meet with the strict demands of this application, powered with 32 A, 440 V 50/60 Hz, Amphenol offers water-tight (IP67) reefer plugs and sockets, 3P+E products with earth sleeve in 3 o'clock position, according to IEC/EN 60309-2.

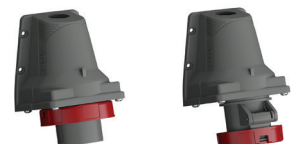
Amphenol has extensive experience designing and producing industrial plugs and sockets. High functionality, reliability and safety are aspects valued by customers. The high quality along with a robust design results in a range of products that are ideal for heavyduty applications.

The wide range of Amphenol contains plugs, connectors, outlets, inlets as well as interlocked socket outlets and socket outlets with residual current devices and miniature circuit breakers for this application. These products are part of Amphenol's Tough & Safe and Critical & Safe product groups, all of them designed to be corrosion, impact and UV resistant.

EASY & SAFE, 32 A. Watertight
 Housing in plastic (PA).


332EP3W

332EC3W



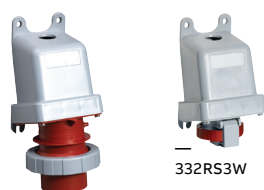
332EBS3W

332ERS3W



332P3W

332C3W



332BS3W

332RS3W



332RAU3W

332BAU3W



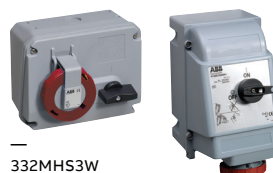
332RL3W

332MPM3W



332MVS3W

332RPM3W



332MHS3W

332MVS3WH

Voltage V	Frequency Hz	Cable entry with knock-outs mm	Cable area mm ²	Type	Order Code	Pkg qty	Weight pkg (1pce) kg
Plug, cable entry with compression gland							
380...440	50/60	-	2.5...6 mm ²	332EP3W	2CMA101100R1000	1	0.25
Connector, cable entry with compression gland							
380...440	50/60	-	2.5...6mm ²	332EC3W	2CMA101147R1000	1	0.30
Surface inlets							
380...440	50/60	Ø25 mm	2.5...10mm ²	332EBS3W	2CMA101194R1000	1	0.27
Surface socket outlet							
380...440	50/60	Ø25 mm	2.5...10mm ²	332ERS3W	2CMA101241R1000	1	0.32

TOUGH & SAFE, 32 A. Watertight
 Housing in plastic (PBT).

Voltage V	Frequency Hz	Cable entry with knock-outs mm	Cable area mm ²	Type	Order Code	Pkg qty	Weight pkg (1pce) kg
Plug, cable entry with compression gland							
380...440	50/60	-	2.5...6 mm ²	332P3W	2CMA166732R1000	1	0.30
Connector, cable entry with compression gland							
380...440	50/60	-	2.5...6 mm ²	332C3W	2CMA166598R1000	1	0.38
Surface inlet							
380...440	50/60	Ø25 mm	2.5...10mm ²	332BS3W	2CMA167100R1000	1	0.46
Surface socket outlet							
380...440	50/60	Ø25 mm	2.5...10mm ²	332RS3W	2CMA167177R1000	1	0.43
Panel mounted socket outlet, with unified angled flange							
380...440	50/60	-	2.5...10mm ²	332RAU3W	2CMA166958R1000	1	0.21
Panel mounted socket inlet, with angled flange							
380...440	50/60	-	2.5...10mm ²	332BAU3W	2CMA166640R1000	1	0.24
Surface socket outlet for looping, outlet is connected to terminal block 2x(2.5 - 20 mm²)							
380...440	50/60	2 x Ø25 mm		332RL3W	2CMA168486R1000	1	0.70

CRITICAL & SAFE, 32 A. Watertight
 Housing in plastic (PBT).

Voltage V	Frequency Hz	Cable entry with knock-outs mm	Cable area mm ²	Type	Order Code	Pkg qty	Weight pkg (1pce) kg
Switched interlocked socket outlet with protection, contains MCB series S201/S203 characteristic C							
380...440	50/60	2 x Ø25 mm	2.5...10mm ²	332MPM3W	2CMA168013R1000	1	1.81
Switched interlocked socket outlet, vertical							
380...440	50/60	Ø25 mm	2.5...10mm ²	332MVS3W	2CMA167876R1000	1	0.72
Surface socket outlet with protection, contains MCB type S201/S203 characteristic C							
380...440	50/60	2 x Ø25 mm	2.5...10mm ²	332RPM3W	2CMA168225R1000	1	1.23
Switched interlocked socket outlet, horizontal. Cable entry with knock-outs							
380...440	50/60	Ø25 mm up/ M25 down	2.5...10mm ²	332MHS3W	2CMA167853R1000	1	0.63
Switched interlocked socket outlet. Heavy duty. Cable entry with knock-outs							
380...440	50/60	Ø25 mm + 32mm on top and drill marks on bottom	2.5...10mm ²	332MVS3WH ¹⁾	2CMA100662R1000	1	1.91

¹⁾ - The switch handle is padlockable and can be equipped with an auxiliary contact