



AHD AHD Series™

Circular Thermoplastic Connectors for Diagnostic Applications



Available in 6 Position: 10-14AWG, 25A, Size 12; **9 Position:** 14-20AWG, 13A, Size 16

Amphenol Sine Systems AHD Series™ Connectors were developed in response to the overwhelming need for an economic alternative to today's existing diagnostic product options. Designed specifically as a cost-conscious, reliable alternative, intermateable to industry standard 6 and 9 pin connectors, the AHD Series™ is ideal for any situation where either controlled and/or uncontrolled environmental conditions exist. Amphenol Sine Systems AHD Series™ Connectors offer both a smooth, non-sealing option for controlled applications, as well as an environmentally-sealed, threaded option for more demanding applications.

AHD Series™ - Features And Benefits

Integrated Alignment Keys	Tactile verification for blind mating
Strong Thermoplastic Housing	Extended service life
Operating Temperature Range	-55°C TO +125°C - Wide range compatibility
Economically Sound	Low overall cost
Rohs Compliant	Environmentally friendly
UI Approval	Certified and compliant
Contact Current Rating	At +125°C, continuous, less thru wire: #12 contact = 25A max. current; #16 contact = 13A max. current
Physical Shock	No locking, unmating or other unsatisfactory result after 50 g's in each of 3 mutually perpendicular planes.
Dielectrical Strength	1500 volts minimum
Vibration	Maintains continuity and exhibits no mechanical or physical damage after vibration. (20 g's at 10-2000 Hz)
Operating Temperature Range	-55°C TO +125°C at rated current
Insulation Resistance	1000 megohms minimum at 25°C.
Durability	No electric or mechanical defects after 100 cycles of engagement and disengagement.
Corrosion Resistance	No evidence of corrosion after exposure to 48 hrs of salt spray per MIL-STD 1344 method 1001
Housings	Thermoplastic
Seals	Silicone Elastomer
Contacts	Copper Alloy/Gold plated



A Series™ Family



Standard products. Custom solutions
Customer Service +1 800 394 7732

AHD Series™ - Part Offering and Compatibility

Amphenol Sine Systems P/N	Position	Part Description	Deutsch P/N
AHD10-6-12P	6	Receptacle	HD10-6-12P
AHD16-6-12S	6	Plug, Smooth Shell Diagnostic Grade	HD16-6-12S
AHD16-6-12SB010	6	Plug, Locking Ring	HD16-6-12SB010
AHDC-16-6	6	Receptacle, Cap, Grey	HDC16-6
AHD10-9-1939P	9	Receptacle, Flange	HD10-9-1939P
AHD14-9-1939P	9	Receptacle, In-Line Threaded Rear J1939	HD14-9-1939P
AHDC-16-9	9	Receptacle, Cap	HDC16-9
AHD16-9-1939S	9	Plug, Locking Ring	HD16-9-1939S
AHD16-9-96S	9	Plug, Locking Ring (non-J1939)	HD16-9-96S
AHD17-9-1939S	9	Plug, Smooth Shell	HD17-9-1939S
AHDC-16-9	9	Receptacle, Cap, Grey	HDC16-9
AHDC-16-9-BLK	9	Receptacle, Cap, Black	-
AHDC-16-9-OBDBK	9	Receptacle, Cap, Black, OBD Label	-
AHDC169-T-OBDBK	9	Receptacle, Cap w/ Tether, Black, OBD Label	-
AHDC169-T-BLK	9	Receptacle, Cap w/ Tether, Black	-
AHDC169-T	9	Receptacle, Cap w/ Tether, Grey	-
AHDC169-TMOBDBK	9	Receptacle, Cap w/ Wire Tether, Black, OBD Label	-
AHDC169-TMBLK	9	Receptacle, Cap w/ Wire Tether, Black	-
AHDC169-TM	9	Receptacle, Cap w/ Wire Tether, Grey	-
AHD10-9-96P	9	Receptacle (Non J-1939) SPECIAL ORDER	HD10-9-96P
AHD14-9-96P	9	Receptacle, In Line Threaded Rear SPECIAL ORDER	HD14-9-96P

AHD Series™ - Contact Options

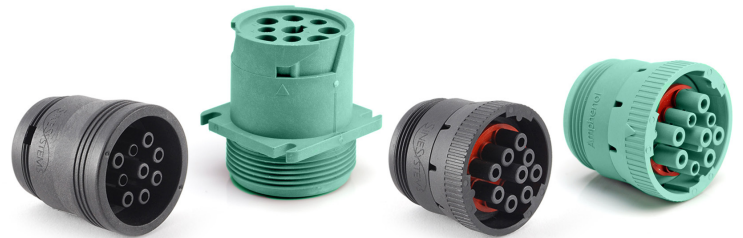
Amphenol Sine Systems P/N	Position	Part Description
AT60-204-12141	6	Male Pin, Size12, Solid, 12-14AWG, Nickel Plated
AT62-203-12141		Female Socket, Size12, Solid, 12-14AWG, Nickel Plated
AT60-220-1231		Male Pin, Size12, Solid, 12-14AWG, Gold Plated
AT62-210-1231		Female Socket, Size12, Solid, 12-14AWG, Gold Plated
AT60-12-0166		Male Pin, Size12, Stamped & Formed, 12-14AWG, Nickel Plated
AT62-12-0166		Female Socket, Size12, Stamped & Formed, 12-14AWG, Nickel Plated
AT60-12-0144		Male Pin, Size12, Stamped & Formed, 12-14AWG, Gold Plated
AT62-12-0144		Female Socket, Size12, Stamped & Formed, 12-14AWG, Gold Plated
AT60-14-0122	9	Male Contact, Size 16, Stamped & Formed, 14-16AWG, Nickel Plated
AT60-14-0144		Male Contact, Size 16, Stamped & Formed, 14-16AWG, Gold Plated
AT60-202-1631		Male Pin, Size 16, Machined, 16-20AWG, Gold Plated
AT60-202-16141		Male Pin, Size 16, Machined, 16-20AWG, Nickel Plated
AT62-16-0122		Female Contact, Size 16, Stamped & Formed, 16-18AWG, Nickel Plated
AT62-16-0144		Female Contact, Size 16, Stamped & Formed, 16-18AWG, Gold Plated

For more information, contact: Customer Service, +1 800 394 7732, csr@amphenol-sine.com

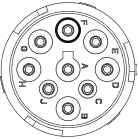
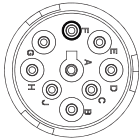
What Type Are You?

AHD Series™ J1939 Type 1 & 2 On-Vehicle Data Connectors

J1939 has become the accepted industry standard and the choice for vehicle diagnostic and data communication for commercial heavy-duty, off-highway, truck, bus, marine propulsion, power generation, industrial pumping, construction, and material handling machines. J1939 is a higher-layer protocol based on Controller Area Network (CAN). Adopted widely by the diesel engine industry, it provides diagnostic data such as vehicle engine speed, temperature, oil temperature, exhaust emissions, and other customizable options.



What Are The Differences Between Type 1 and 2?

	Pin	
Type 1 (Black)		Type 2 (Green)
Ground	A	Ground
Battery	B	Battery
J1939 + 250kb	C	J1939 + 500kb
J1939 - 250kb	D	J1939 - 500kb
J1939 Shield	E	J1939 Shield
J1708+	F	J1708+ / J1939 + 250kb
J1708-	G	J1708- / J1939 - 250kb
OEM Specific	H	OEM Specific
OEM Specific	J	OEM Specific



A ASeries™ Family

Standard products. Custom solutions
Customer Service +1 800 394 7732



AHD Series J1939 Type 1 & 2

AHD Receptacles	Part Number	Type	Description
	AHD10-9-1939P	1	AHD Series, 9 Position, Receptacle, Type 1
	AHD10-9-1939PE	1	AHD Series, 9 Position, Receptacle, Reduce Seal, Type 1
	AHD17-9-1939PES	1	AHD Series, 9 Position, Receptacle, Jam Mount, Extended Shroud, Reduced Seal, Type 1
	AHD10-9-1939P-B022	1	AHD Series, 9 Position, Receptacle, Jam Mount, Type 1 *Available Q1 2018
	AHD10-9-1939PR-B022	1	AHD Series, 9 Position, Receptacle, Reduced Seal, Jam Mount, Type 1 *Available Q1 2018
	AHD14-9-1939P	1	AHD Series, 9 Position, Receptacle, In-Line, Type 1
	AHD10-9-1939P80	2	AHD Series, 9 Position, Receptacle, Type 2
	AHD10-9-1939P8R	2	AHD Series, 9 Position, Receptacle, Reduced Seal, Type 2
	AHD17-9-1939PES80	2	AHD Series, 9 Position, Receptacle, Jam Mount, Extended Shroud, Reduced Seal, Type 2
	AHD10-9-1939P-BP80	2	AHD Series, 9 Position, Receptacle, Jam Mount, Type 2 *Available Q1 2018
AHD10-9-1939PR-BP80	2	AHD Series, 9 Position, Receptacle, Reduced Seal, Jam Mount, Type 2 *Available Q1 2018	
AHD Plugs	Part Number	Type	Description
	AHD16-9-1939S	1	AHD Series, 9 Position, Plug, Locking Ring, Type 1
	AHD16-9-1939SE	1	AHD Series, 9 Position, Plug, Reduced Seal, Locking Ring, Type 1
	AHD17-9-1939S	1	AHD Series, 9 Position, Plug, Smooth Shell Diagnostic Grade, Type 1
	AHD16-9-1939S80	2	AHD Series, 9 Position, Plug, Locking Ring, Type 2
	AHD16-9-1939S8R	2	AHD Series, 9 Position, Plug, Reduced Seal, Locking Ring, Type 2
AHD Caps	Part Number	Type	Description
	AHDC-16-9-BLK	1	AHD Series, 9 Position, Receptacle, Cap, Black, Type 1
	AHDC-16-9-OBDBK	1	AHD Series, 9 Position, Receptacle, Cap, OBD Black, Type 1
	AHDC-16-9-OBDBGN	2	AHD Series, 9 Position, Receptacle, Cap, OBD Green, Type 2
AHD Panel Nuts	Part Number	Type	Description
	AHD17-PN01	1	AHD Series, 9 Position, Panel Nut (used on the AHD17-9-1939PES/80), Black, Type 1
	AHD17-PN01-GRN	2	AHD Series, 9 Position, Panel Nut (used on the AHD17-9-1939PES80) Green, Type 2
	AHDP18-PN01	1	AHD Series, 9 Position, Panel Nut (used on the AHD10-9-1939P/R-BP80/B022), Black, Type 1
AHD Cap & Tether	Part Number	Type	Description
	AHDC169-T-OBDBK	1	AHD Series, 9 Position, Receptacle, Cap w/ Rubber Tether, OBD Black, Type 1
	AHDC169-T-OBDBGN	2	AHD Series, 9 Position, Receptacle, Cap w/ Rubber Tether, OBD Green, Type 2
	AHDC169-T-BLK	1	AHD Series, 9 Position, Receptacle, Cap w/ Rubber Tether, Black, Type 1
	AHDC169-TMOBDBK	1	AHD Series, 9 Position, Receptacle, Cap w/ Metal Tether, OBD Black, Type 1
	AHDC169-TMOBDBGN	2	AHD Series, 9 Position, Receptacle, Cap w/ Metal Tether, OBD Green, Type 2
	AHDC169-TMBLK	1	AHD Series, 9 Position, Receptacle, Cap w/ Metal Tether, Black, Type 1

Important: All images shown above are just a sampling of available AHD Series J1939 parts. For complete selection, refer to website.

For more information, contact: Customer Service, +1 800 394 7732, csr@amphenol-sine.com