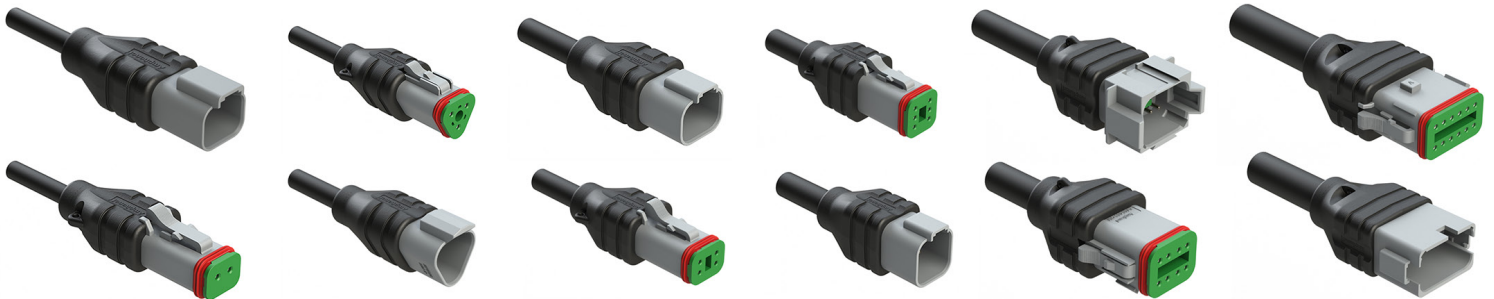


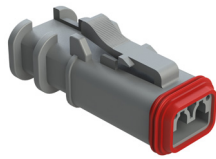


AT ATSeries™ Cable Assemblies

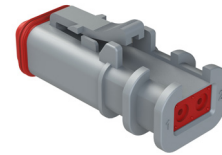


Amphenol Sine Systems' **AT Series™ Cable Assemblies** are an overmolded strain relief option for our high-performance, thermoplastic, cost-effective **AT Series™ Connectors**.

Available in 2, 3, 4, 6, 8 and 12 position Plugs and Receptacles with single-ended cordset standard lengths of 1, 2, 4, 5 and 10 Meters. Contact Customer Service for custom cable length options.



SP Structure+™ AT



Our Plug assemblies feature our **StructurePlus™ AT** design, **an engineered, one-piece, solid body construction specifically designed for cable assembly operations.** The added connector structure results in enhanced connection integrity that is an essential component for connecting cable in harsh environments.

The process utilizes first-quality resins which encapsulate the wire terminations into the connector housing creating a highly functional & compact strain relief to ensure a long service life. Built to exceptional quality standards, the resulting barrier of protection provides **IP68 rated (1M of water for 24 hrs in mated condition)** sealing capability, preventing liquid ingress for a variety of markets such as Heavy Duty, Transportation, Marine, Diagnostic, Military, Alternative Energy and Agricultural.



A ASeries™ Family



Standard products. Custom solutions
Customer Service +1 800 394 7732

Specifications

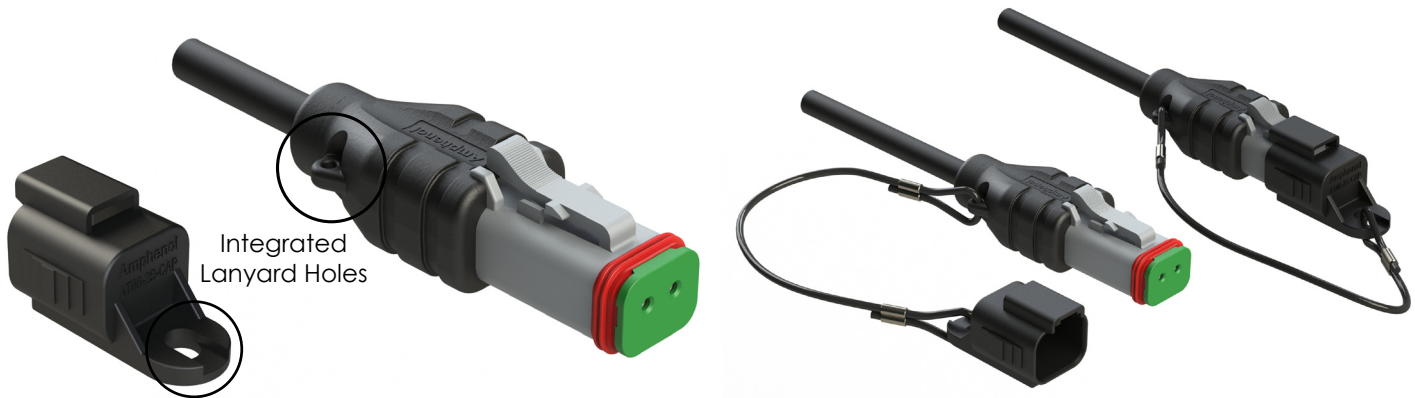
| | | |
|----------------------------------|---|----------------|
| Temperature Range | -40°C to +100°C | |
| Current Rating @ 25°C Ambient | 2 Pos: 15A Max | 6 Pos: 10A Max |
| | 3 Pos: 14A Max | 8 Pos: 10A Max |
| | 4 Pos: 12A Max | 12 Pos: 8A Max |
| Voltage | 300V AC/DC | |
| Min. Mating Cycles | >100 | |
| Sealing Protection | IP68 (1M of water for 24 hrs in mated condition) | |
| Housing/Overmold | PA66/Polyamide | |
| Seals | Silicone Rubber | |
| Keying Options (8 & 12 pos only) | Key A - Grey, Key B - Black, Key C - Green, Key D - Brown | |

| | |
|------------------|--|
| Contacts | Size 16, Nickel-plated |
| RoHS Compliant | All connector materials meet the requirements of the EU Directive 2002/95/EC |
| Cable Components | 18AWG, SRPVC Insulated Conductors 41/34 Bare Copper |
| Cable Type | TPE, Black |
| Cable Approvals | AWM 21270, CSA AWM I/II A/B FT4 |
| Cable Resistance | Sunlight and Oil Resistant |
| RoHS 3 Compliant | All cable materials meet the requirements of the EU Directive 2015/863 |

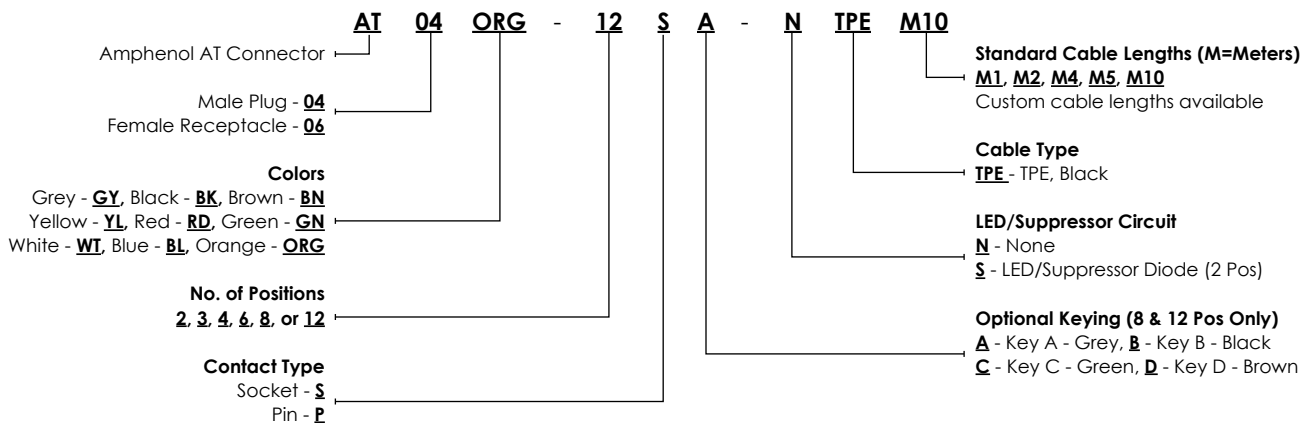
Note: All datasheets containing specifications and wiring diagrams can be found at www.amphenol-sine.com under their specific part numbers.

Key Features

- Enhanced Sealing Protection
- Relieves Stress on Conductors
- Ergonomic Grip Design
- Integrated Lanyard Holes
- Cosmetically Appealing
- Tamper-Proof
- Protective Caps Available for 2, 3, 4, 6, 8 & 12 Position Plugs



AT Series™ Cable Assembly Part Numbering Sequence



AT Series™ Cable Assemblies

Available in M1, M2, M4, M5 and M10 lengths (M = Meters)

| Image | Part Number | Description | Base Product Line |
|-------|----------------------|---|--------------------------|
| | AT04GY-2P-N-TPE-MX | 2 Pos, Molded Recep, Black TPE Single-ended Cable Assy, AT Series™, Mates to AT06-2S | AT ATSeries™ |
| | AT06GY-2S-N-TPE-MX | 2 Pos, Molded Plug, Black TPE Single-ended Cable Assy, StructurePlus™ AT, Mates to AT04-2P | SP Structure+™ AT |
| | AT04GY-3P-N-TPE-MX | 3 Pos, Molded Recep, Black TPE Single-ended Cable Assy, AT Series™, Mates to AT06-3S | AT ATSeries™ |
| | AT06GY-3S-N-TPE-MX | 3 Pos, Molded Plug, Black TPE Single-ended Cable Assy, StructurePlus™ AT, Mates to AT04-3P | SP Structure+™ AT |
| | AT04GY-4P-N-TPE-MX | 4 Pos, Molded Recep, Black TPE, Single-ended Cable Assy, AT Series™, Mates to AT06-4S | AT ATSeries™ |
| | AT06GY-4S-N-TPE-MX | 4 Pos, Molded Plug, Black TPE Single-ended Cable Assy, StructurePlus™ AT, Mates to AT04-4P | SP Structure+™ AT |
| | AT04GY-6P-N-TPE-MX | 6 Pos, Molded Recep, Black TPE, Single-ended Cable Assy, AT Series™, Mates to AT06-6S | AT ATSeries™ |
| | AT04GY-6S-N-TPE-MX | 6 Pos, Molded Plug, Black TPE Single-ended Cable Assy, StructurePlus™ AT, Mates to AT06-6P | SP Structure+™ AT |
| | AT04GY-08PX-N-TPE-MX | 8 Pos, Molded Recep, Black TPE Single-ended Cable Assy, AT Series™, Mates to AT06-08SA Optional Keying: Keyed A-Grey, Keyed B-Black, Keyed C-Green, Keyed D-Brown | AT ATSeries™ |
| | AT04GY-08SX-N-TPE-MX | 8 Pos, Molded Plug, Black TPE Single-ended Cable Assy, StructurePlus™ AT, Mates to AT06-08PA Optional Keying: Keyed A-Grey, Keyed B-Black, Keyed C-Green, Keyed D-Brown | SP Structure+™ AT |
| | AT04GY-12PX-N-TPE-MX | 12 Pos, Molded Recep, Black TPE Single-ended Cable Assy, AT Series™, Mates to AT06-12SA Optional Keying: Keyed A-Grey, Keyed B-Black, Keyed C-Green, Keyed D-Brown | AT ATSeries™ |
| | AT04GY-12SX-N-TPE-MX | 12 Pos, Molded Plug, Black TPE Single-ended Cable Assy, StructurePlus™ AT, Mates to AT06-12PA Optional Keying: Keyed A-Grey, Keyed B-Black, Keyed C-Green, Keyed D-Brown | SP Structure+™ AT |

Related Items

A A Series™ Caps

Protective Thermoplastic Caps for AT, ATM and ATP Series™ Connectors

Available in 2-12 position (depending on Series)

Amphenol Sine Systems' **A Series™ Caps** are a low-cost alternative to using standard connectors with sealing plugs and provide an optional protective covering for harsh environmental and industrial applications. Fully sealed protective plug & receptacle caps are available for the AT, ATM and ATP Series™.

All caps are IP68 rated (1M of Water for 24 Hrs) when mated.

Potential Applications: Heavy Equipment, Agriculture, Construction, Transportation, Off-Road, Mining, Industrial, Railway, Automotive, Diagnostics, Marine, Water Resistance, Harsh Environments



SP Structure+™ Family

Overmold Compatible Connectors for AT, AT LED, ATHD and ATP Series™ Connectors

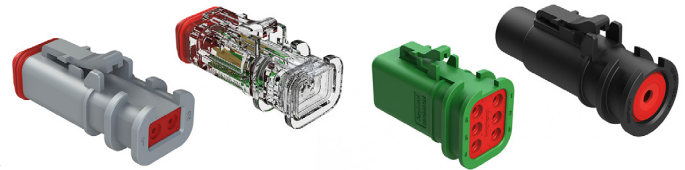
Available in 1, 2, 3, 4, 6, 8 and 12 position

Amphenol Sine Systems' **StructurePlus™ Family** of overmold compatible connectors are an **engineered, one-piece, solid body construction and are specifically designed for cable assembly operations requiring custom molding or shrink tube requirements**. The added connector structure results in enhanced connection integrity that is an essential component for connecting cable in harsh environments.

Key Features

- **StructurePlus™ AT**-2, 3, 4, 6, 8, 12 pos, 13A; **StructurePlus™ AT LED**-2 pos, 13A; **StructurePlus™ ATHD**-1 pos, 25-60A; **StructurePlus™ ATP**-6 pos, 25A
- Engineered one-piece solid body construction, eliminates previously required snap-on-back shell
- Intermatable with industry standard connectors

Potential Applications: Heavy Duty, Transportation, Marine, Diagnostic, Military, Alternative Energy, Agricultural as well as other demanding interconnect applications



For more information, contact: Customer Service, +1 800 394 7732, csr@amphenol-sine.com