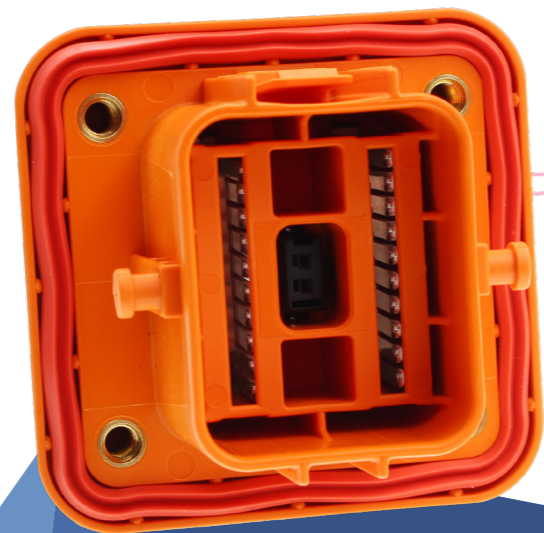


MCMSD - Key features and product specifications

The Excel|mate MC MSD series is the smallest, most cost-effective variant of the MSD series. With their compact size, the connectors are perfect for small installation spaces, with comparable specifications to the MINI MSD.

The MC MSD offers a solution to safely disconnect the HV battery pack from the electrical system without tools or to protect it from a short circuit using various fuses. It is designed for Energy Storage and Data Center.



Description

MCMSD is an Electric Vehicle-friendly connector that has been mainly designed for Energy Storage and Data Center.

Mechanical

Mating cycles ≥ 50 cycles

Electrical

Rated current: 350A@ ambient temperature 70°C

Rated voltage: 1500V (DC)

Insulation resistance: 200M Ω Min

Dielectric withstanding voltage: 4000V AC

Environmental

Ambient temperature: -40 to 70°C

Operating temperature: -40 to 125°C

Waterproof (mated): IP67; IP6K9K


Touch-proof: IP2XB

Standards


RoHS


• Need to order terminals and TPA separately.

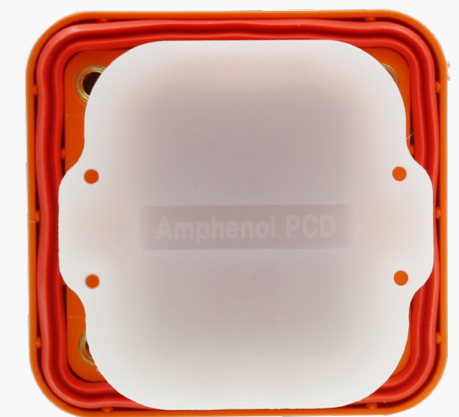
CONTACT DETAILS:

 www.amphenol-industrial.de

 industrial@amphenol.de

 +49 7131 929 0

 August-Haeusser-Str. 10
74080 Heilbronn
Germany



INDUSTRIAL@AMPHENOL



www.amphenol-industrial.de