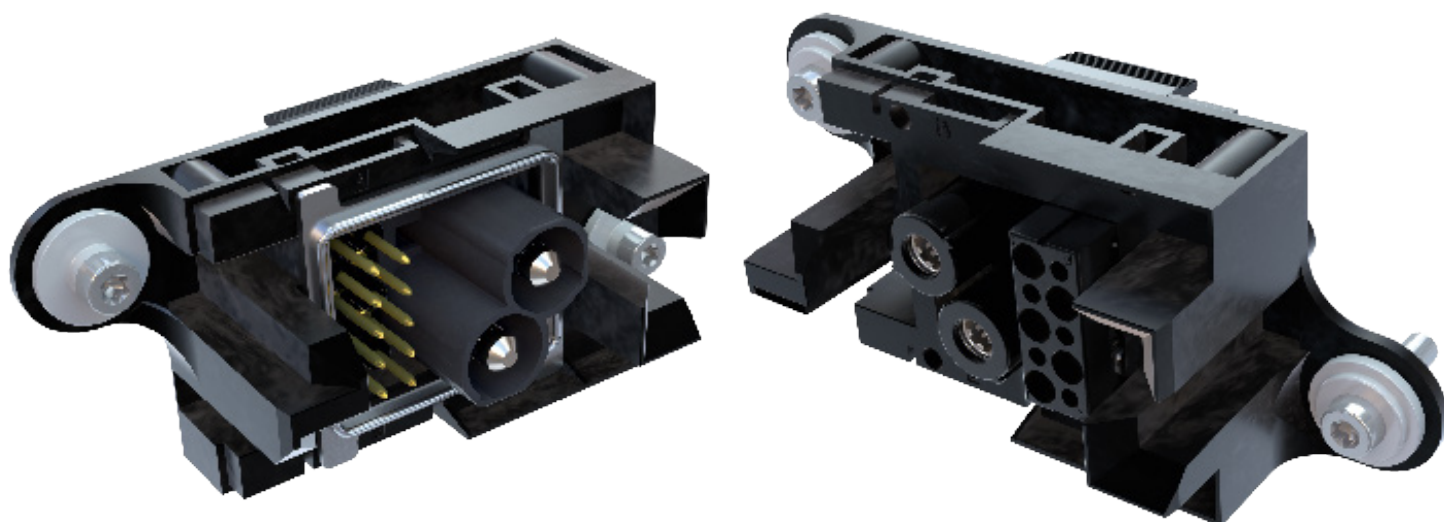


# energy|mate®



## Advantages

- up to +/- 10 mm guide range for blind mating possible
- IP20 or IP68 / IP69K in mated condition (fixed installation - floating on request)
- up to 325A / 1000V
- possibility of additional power and / or signal contacts as well as HVIL by using the modular system

## Application

- „Blind mating“
- energy storage
- battery connections
- switch cabinet
- machine building

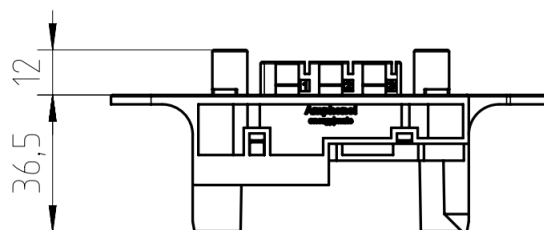
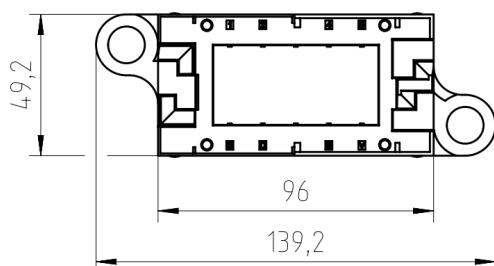
## Modular connector with up to +/- 10mm tolerance compensation

Use the wide range of our heavy|mate M modules and combine them with energy|mate frames for applications that require blind mating. You can choose between high current (up to 95mm<sup>2</sup>/325A) and signal modules (up to 20 contacts per module) as well as RJ45, pneumatic, fiber optic or quintax modules. We would be pleased to provide you with an overview of possible solutions for your project.

### Typical use cases including parts list

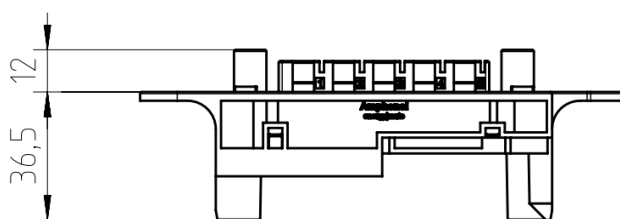
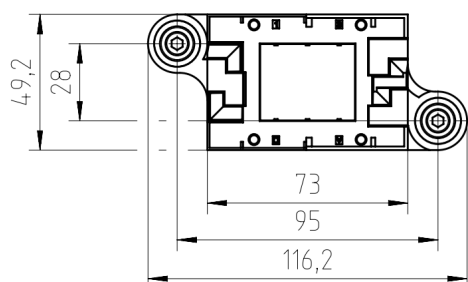
2x50mm<sup>2</sup> + 10x0,5mm<sup>2</sup> - e.g. energy storage system:

Pin side	Socket side	Quantity per set	Description
C146 N05 002 G8	C146 N05 004 G8	1	energy mate frame for 5 modules
C146 A01 001 E8	C146 B01 004 E8	2	Power module 1x50mm <sup>2</sup>
N01 100 6001 001	N02 100 6121 002	2	Power contact 1x50mm <sup>2</sup>
C146 A10 001 E8	C146 B10 001 E8	1	Signal module 10x0,5mm <sup>2</sup>
VN01 016 0025 2C	VN02 016 0025 2C	0,1	Bag of 100 signal contacts 0,5mm <sup>2</sup>



2x25mm<sup>2</sup> + HVIL - e.g. automated guided vehicles in intralogistics:

Pin side	Socket side	Quantity per set	Description
C146 N03 004 G8	C146 N03 002 G8	1	energy mate frame for 3 Module
C146 A02 001 E8	C146 B02 001 E8	1	Power module 2x25mm <sup>2</sup>
N01 060 0004 1	N02 060 6114 001	2	Power contact 25mm <sup>2</sup>
C146 D10 811 E8	C146 C10 001 G8	1	HVIL module
VN01 016 0002 1	VN02 016 0002 1	0,02	Bag of 100 signal contacts 0,5-1,5mm <sup>2</sup>



## Technical Data

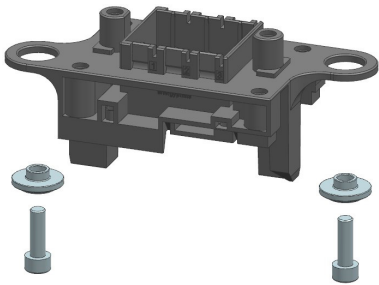
Climatic Characteristics	Standard	Value
Climate category	IEC 60068-1	40 / 125 / 21
Maximum temperature	IEC 60512-11-9	+125°C
Minimum temperature	IEC 60512-11-10	-40°C
Mechanical characteristics	Standard	Wert
Mechanical operation	IEC 60512-9-1	≥ 500 mating cycles
Material	Standard	Wert
Modul frame		PA-GF
Flammability	UL 94	V-0
Schwimmende Scheiben		steel Ni-plated
MS screws		steel ZN-plated
Sealing		NBR

Frontmontage: Fixer und schwimmender Einbau möglich.  
Rückwandmontage: fixer Einbau möglich. Toleranzausgleich über die Applikation.

Alle Module heavymate M verwendbar (siehe Katalog heavymate):  
<https://www.amphenol-industrial.de/de/amph/download/viewFile/MjQ=>

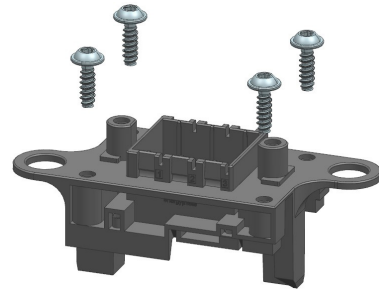
Catalogue number	Module slots	Assembly	IP-degree	Pin/Socket
C146 N03 002 G8	3	Front	IP20	S + B
C146 N03 004 G8	3	Back	IP20	S + B
C146 N13 002 G8	3	Front	IP68 / IP69K	S
C146 N13 004 G8	3	Back	IP68 / IP69K	S
C146 N23 002 G8	3	Front	IP68 / IP69K	B
C146 N23 004 G8	3	Back	IP68 / IP69K	B
C146 N05 002 G8	5	Front	IP20	S + B
C146 N05 004 G8	5	Back	IP20	S + B
C146 N15 002 G8	5	Front	IP68 / IP69K	S
C146 N15 004 G8	5	Back	IP68 / IP69K	S
C146 N25 002 G8	5	Front	IP68 / IP69K	B
C146 N25 004 G8	5	Back	IP68 / IP69K	B

## Technical Data



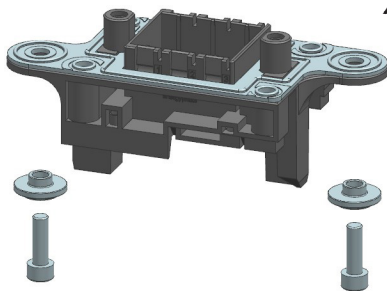
**C146 N03 002 G8**

unprotected with fixed / floating mounting



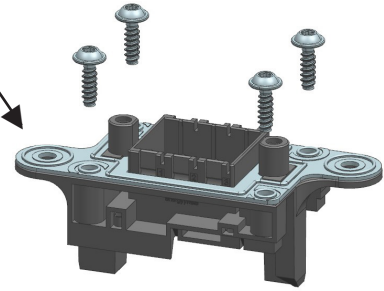
**C146 N03 004 G8**

unprotected with fixed mounting



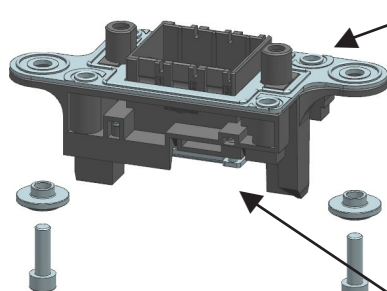
**C146 N13 002 G8**

for tightness when plugged in with fixed mounting



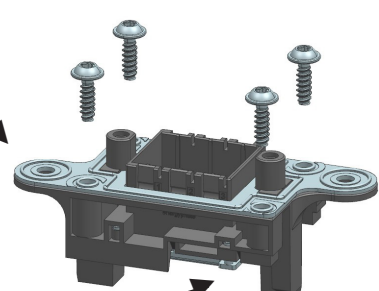
**C146 N13 004 G8**

Gasket



**C146 N23 002 G8**

for tightness when plugged in with fixed mounting (mating connector)



**C146 N23 004 G8**

Gasket

Profil seal