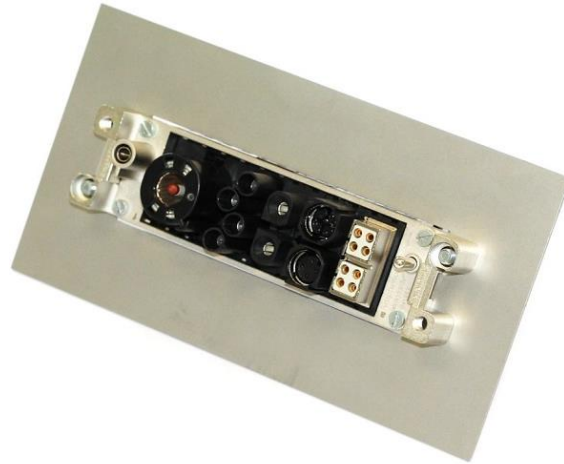


# heavy | mate C146F 2xM12 Module



## Details

- Coding:
  - D-code (4-Pol) shielded – CAT5
  - X- code (4x2-Pol) shielded – CAT7
- Mating cycles: min. 100
- All materials according to EN 45545: R22/R23 – HL3

### Advantages:

- Plug & Play – no harnessing in the final assembly necessary
- 2 x Gigabit interfaces in 1 module
- Can be combined with power contacts up to 325A and contacts

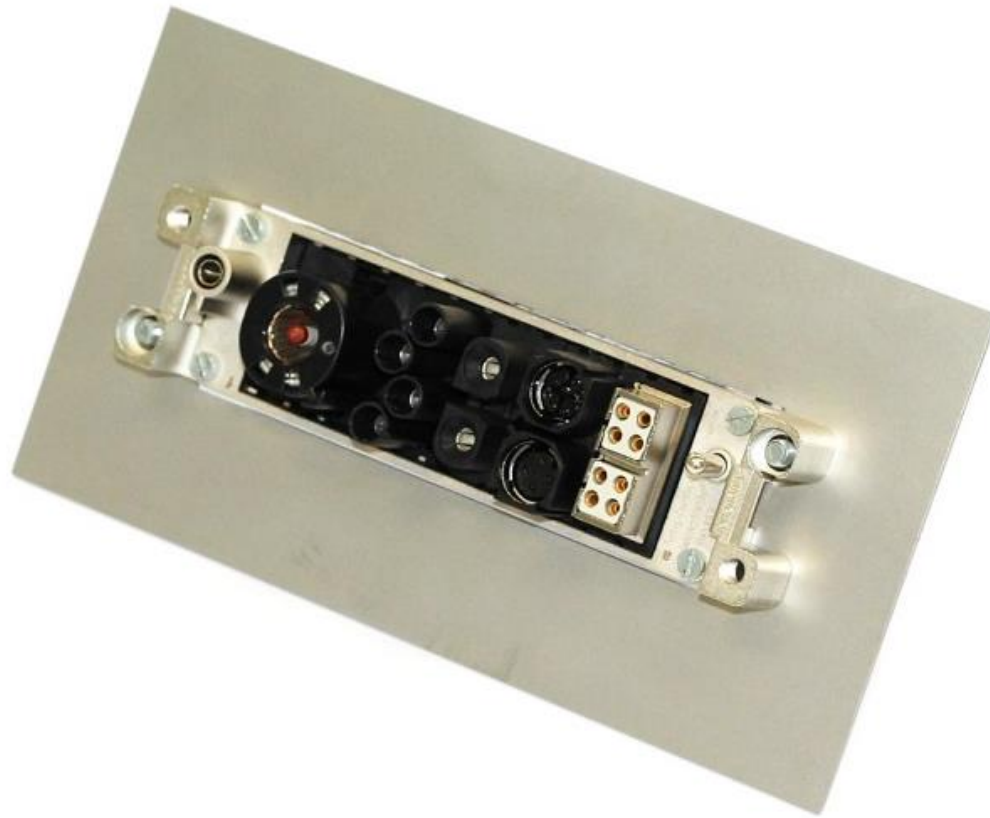
### Applications:

- Railway (RMT)
- Digitalization in factory automation



# Assembled

- Assembled into module frame heavy|mate F



# Modules:



**Pin Module**



**Socket Module**

# Cables

- X- and D- coded



**Pin side**



**Socket side**

# Assembled

- Assembly of 2 cables in one module by easy plug & play assembly



Pin side



Socket side