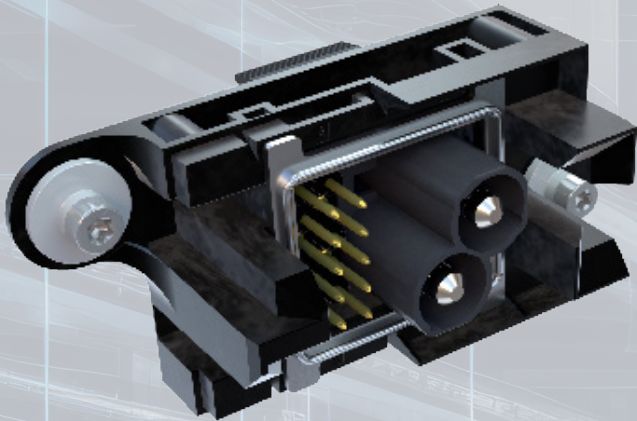


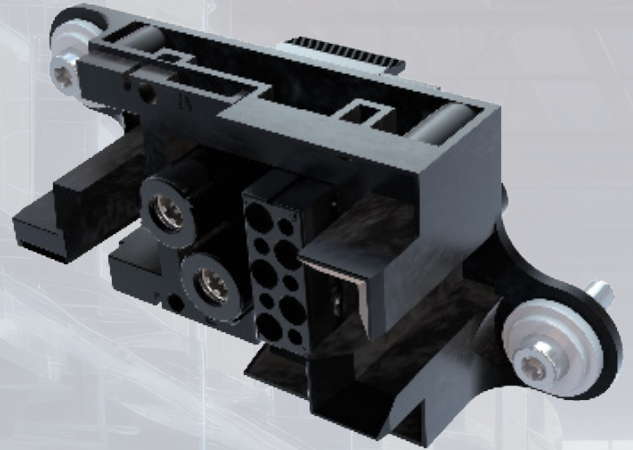
energy|mate® + mc

+mc for high mating cycles up to 10k



Advantages

- Up to +/- 10 mm tolerance compensation possible for blind mating
 - IP20 or IP68 / IP69K in mated condition state (fixed installation or floating)
 - Up to 150A / 1000V
- Possibility of power and signal signal contacts as well as HVIL by use of the modular system



Application

- „Blind plugging“
- Energy storage
- Battery connections
- Switch cabinet
- Distribution cabinet
- Mechanical engineering

Modular connector with up to +/- 10mm tolerance compensation

Use the wide range of our heavy|mate M modules and combine them with energy|mate +mc for applications that require blind mating and high mating cycle. You can choose between high current (up to 25mm²/150A) and signal modules (up to 20 contacts per module). We would be pleased to provide you with an overview of possible solutions for your project.

energy|mate + mc for high mating cycles

The following energy|mate + mc are available for the high mating cycles:

Catalog number	Module slots	Mounting	Protection class	Pin/Socket
C146 N03 102 G8	3	Front	IP20	P + S
C146 N03 104 G8	3	Back	IP20	P + S
C146 N13 102 G8	3	Front	IP68 / IP69K	P
C146 N13 104 G8	3	Back	IP68 / IP69K	P
C146 N23 102 G8	3	Front	IP68 / IP69K	S
C146 N23 104 G8	3	Back	IP68 / IP69K	S
C146 N05 102 G8	5	Front	IP20	P + S
C146 N05 104 G8	5	Back	IP20	P + S
C146 N15 102 G8	5	Front	IP68 / IP69K	P
C146 N15 104 G8	5	Back	IP68 / IP69K	P
C146 N25 102 G8	5	Front	IP68 / IP69K	S
C146 N25 104 G8	5	Back	IP68 / IP69K	S

Modules for high mating cycles

The following modules are available for the high mating cycles:

Pin side	Socket side	Description
C146 A02 001 E8	C146 B02 001 E8	power module 2-pole; 150A, 1000V
C146 A02 101 E8	C146 B02 101 E8	power module 2-pole; 150A, 1000V
C146 A02 801 E8	C146 B02 801 E8	power module 2-pole;; 80A, 1000V
C146 A03 001 E8	C146 B03 001 E8	power module 3-pole; 70A, 630V
C146 A03 801 E8	C146 B03 801 E8	power module 3-pole; 70A, 1000V
C146 A20 001 G8	C146 B20 001 G8	signal module 20-pole; 5A, 63V
C146 D10 001 E8	C146 C10 001 G8	signal module 10-pole; 10A, 250V
C146 D10 811 E8	C146 C10 001 G8	signal module 10-pole; 10A, 250V (HVIL)

* For suitable contacts see [heavy|mate catalog](#) or [homepage](#).