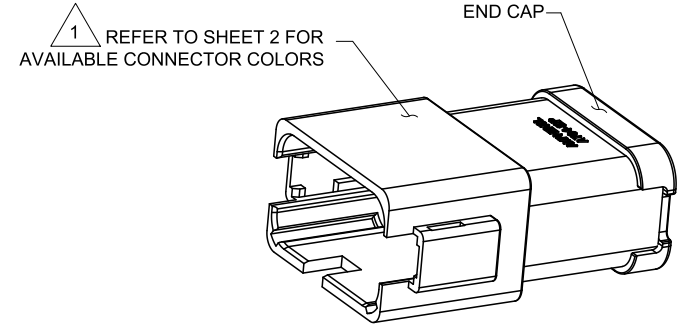
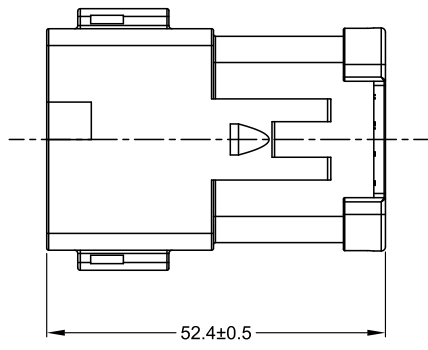
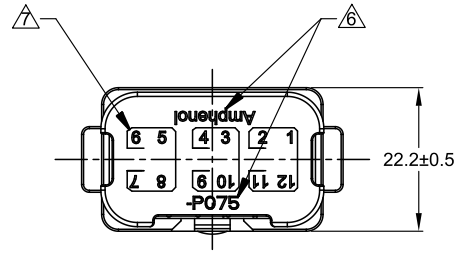
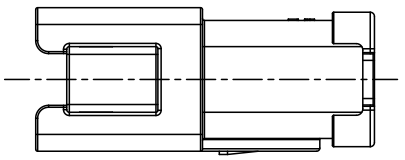
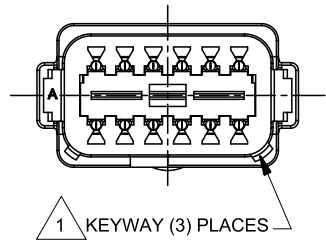
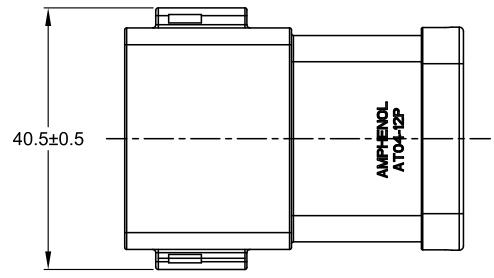


REVISIONS					
REV	ECO	DESCRIPTION	DATE	BY	APPR
A1	-	RELEASE NEW DRAWING	11APR18	ROOKIE	TOMMY
A2	-	REVISED DESCRIPTION	12JUN19	JAH	DH
A3	-	UPDATE THE APPEARANCE	11NOV21	RONALD	TOMMY



NOTES: UNLESS OTHERWISE SPECIFIED

△ SEE SHEET 2 FOR KEY ARRANGEMENTS AND COLORS.

2. MATERIAL:  
HOUSING: THERMOPLASTIC  
SEAL: SILICONE RUBBER  
CONTACT: COPPER ALLOY
3. MODIFICATIONS: 3 PIECES OF 4 PIN BUSBAR WITH NICKEL PLATED
4. SPECIFICATIONS:
  - 4.1 CURRENT RATING: 26 AMPS MAXIMUM FOR THE 4 PIN BUSBAR
  - 4.2 OPERATING TEMPERATURE: -55°C TO +125°C.
  - 4.3 DIELECTRIC WITHSTANDING VOLTAGE: LESS THAN 2 MILLIAMPS CURRENT LEAKAGE @ 1500 VOLTS AC.
  - 4.4 INSULATION RESISTANCE: 1000 MEGOHM MIN @ 25°C.
  - 4.5 MOISTURE RESISTANCE: IP69K & IP68 (1M OF WATER FOR A PERIOD OF 24 HOURS, MATED CONDITION)
  - 4.6 MATING CYCLE DURABILITY: 100 CYCLES
  - 4.7 RoHS COMPLIANT

5. MATING PART: AT06-12SX\* PLUG  
(X=A,B,C,D KEYS \* = AVAILABLE MODIFICATIONS )

△ ORIENTATION OF "Amphenol" AND "-P075" TO BE OPTIONAL

△ BORDERS SIGNIFY THAT EACH GROUP OF PINS (PINS 1,2,11,12 AND PINS 3,4,9,10 AND PINS 5,6,7,8) ARE BUSSED TOGETHER WITH A 4 PIN BUSBAR

8. ALL DIMENSIONS ARE FOR REFERENCE USE ONLY.

SEE SHEET 2		REF: DT04-12PA-P075 & DT04-12PB-P075 & DT04-12PC-P075 & DT04-12PD-P075		ITEM
PART NUMBER		DESCRIPTION		ITEM
QUANTITY	MATERIALS LIST			
UNLESS OTHERWISE SPECIFIED 1) All dimensions are in metric(mm). 2) Tolerances are as follows: 1 PL DEC ±0.30   Fractions ±1/64 2 PL DEC ±0.15   Angles ±1° 3 PL DEC ±0.08		SIGNATURES		DATE
DRAWN: RONALD		APPROVAL: TOMMY		11NOV21
CHECKED: ORION		APPROVAL: TOMMY		12NOV21
ENGINEER:		APPROVAL: TOMMY		15NOV21
MATERIAL SPECIFICATIONS:		CUSTOMER:		
WEIGHT: 27.6g		THIS DRAWING IS SUPPLIED FOR INFORMATION ONLY. DESIGN FEATURES, SPECIFICATIONS AND PERFORMANCE DATA SHOWN HEREON ARE THE PROPERTY OF THE AMPHENOL CORPORATION. NO RIGHTS OF REPRODUCTION ARE IMPLIED. ALL DIMENSIONS ARE SUBJECT TO NORMAL MANUFACTURING VARIATIONS.		
PROCESS SPECIFICATIONS:		SCALE: NONE		
NEXT ASSY:		SIZE: B C-		TYPE: DWG NO: AT04-12PX-P075
		REVISION: A3		
		SHEET 1 OF 2		

TITLE: HYPERBUSS AT 12WAY RECP (3)4 PIN BUSBAR NICKEL-PLATED  
DWG NO: AT04-12PX-P075  
REV: A3  
SH: 1  
OF: 2

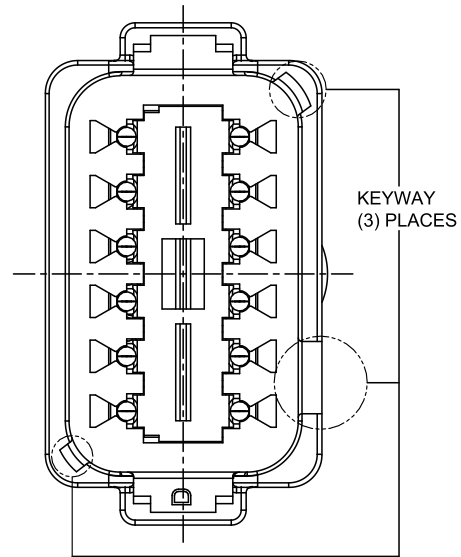
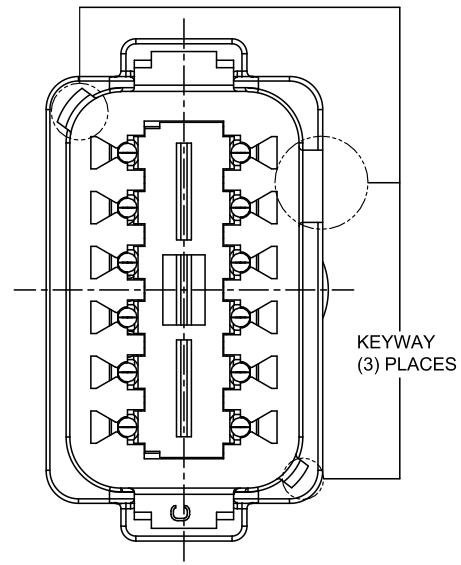
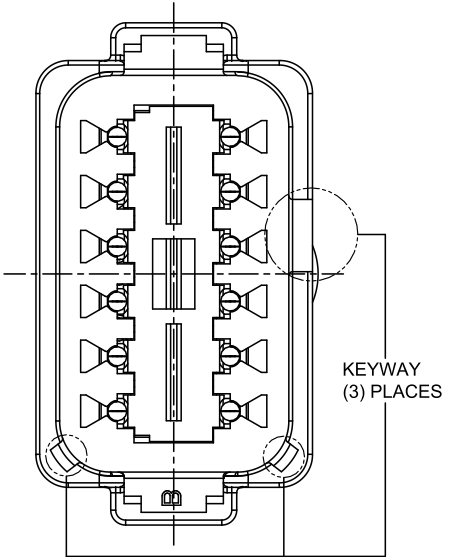
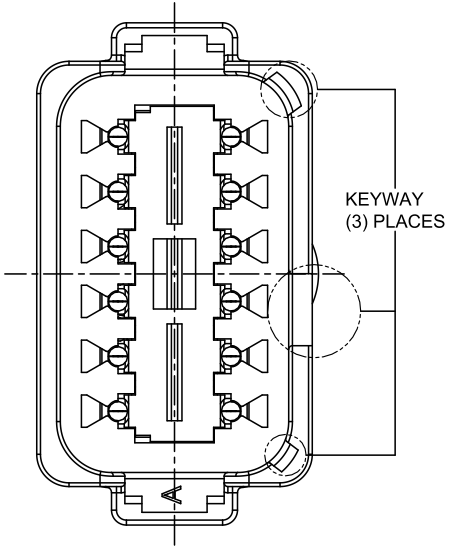
REVISIONS					
REV	ECO	DESCRIPTION	DATE	BY	APPR
A1	-	RELEASE NEW DRAWING	11APR18	ROOKIE	TOMMY
A2	-	REVISED DESCRIPTION	12JUN19	JAH	DH
A3	-	UPDATE THE APPEARANCE	11NOV21	RONALD	TOMMY

P/N AT04-12PA-P075  
KEY-A CONFIGURATION  
STANDARD COLOR: GREY

P/N AT04-12PB-P075  
KEY-B CONFIGURATION  
STANDARD COLOR: BLACK

P/N AT04-12PC-P075  
KEY-C CONFIGURATION  
STANDARD COLOR: GREEN

P/N AT04-12PD-P075  
KEY-D CONFIGURATION  
STANDARD COLOR: BROWN



TITLE: HYPERBUSS AT 12WAY RECP (3)4 PIN BUSBAR NICKEL-PLATED  
DWG NO: AT04-12PX-P075  
REV: A3  
SH: 2  
OF: 2

QUANTITY	PART NUMBER	DESCRIPTION	ITEM								
<b>MATERIALS LIST</b>											
<small>UNLESS OTHERWISE SPECIFIED</small> 1) All dimensions are in metric (mm). 2) Tolerances are as follows: 1 PL DEC ±0.30   Fractions ±1/64 2 PL DEC ±0.15   Angles ±1° 3 PL DEC ±0.08 3) Note reference =		<table border="1"> <thead> <tr> <th>SIGNATURES</th> <th>DATE</th> </tr> </thead> <tbody> <tr> <td>DRAWN: RONALD</td> <td>11NOV21</td> </tr> <tr> <td>CHECKED: ORION</td> <td>12NOV21</td> </tr> <tr> <td>APPROVAL: TOMMY</td> <td>15NOV21</td> </tr> </tbody> </table>		SIGNATURES	DATE	DRAWN: RONALD	11NOV21	CHECKED: ORION	12NOV21	APPROVAL: TOMMY	15NOV21
SIGNATURES	DATE										
DRAWN: RONALD	11NOV21										
CHECKED: ORION	12NOV21										
APPROVAL: TOMMY	15NOV21										
MATERIAL SPECIFICATIONS: <b>WEIGHT: 27.6g</b>		<h1>Amphenol</h1> <p>Sine Systems - www.amphenol-sine.com 44724 Morley Drive Clinton Township, MI 48036</p>									
PROCESS SPECIFICATIONS: NEXT ASSY:		CUSTOMER: THIS DRAWING IS SUPPLIED FOR INFORMATION ONLY. DESIGN FEATURES, SPECIFICATIONS AND PERFORMANCE DATA SHOWN HEREON ARE THE PROPERTY OF THE AMPHENOL CORPORATION. NO RIGHTS OF REPRODUCTION ARE IMPLIED. ALL DIMENSIONS ARE SUBJECT TO NORMAL MANUFACTURING VARIATIONS.									
		SIZE: <b>B C-</b> SCALE: NONE	DWG NO: <b>AT04-12PX-P075</b> SHEET 2 OF 2								
		REVISION: <b>A3</b>									