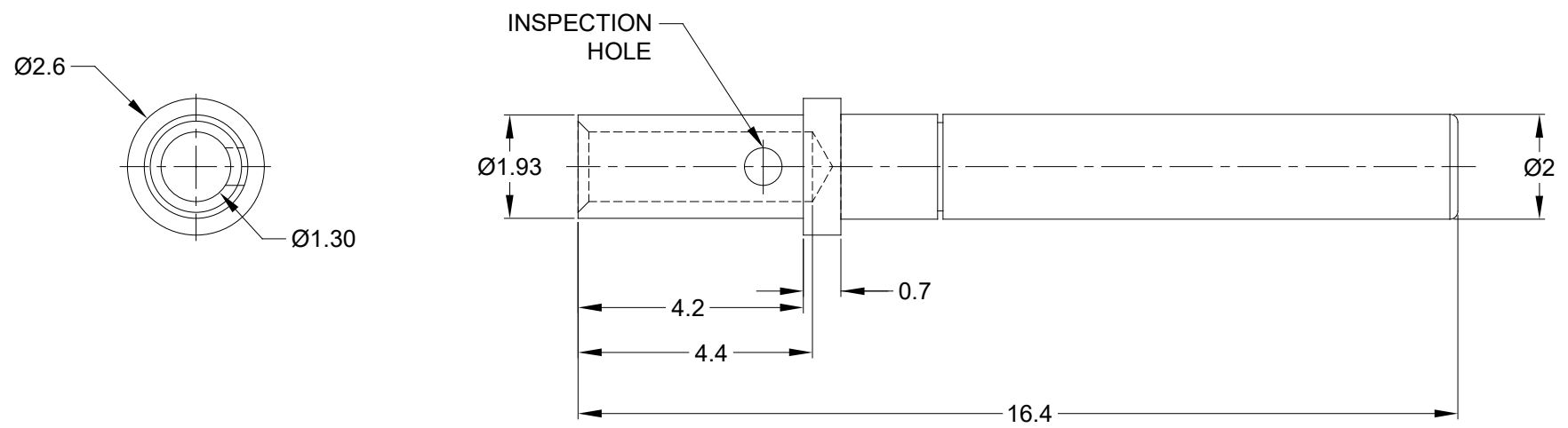


| REVISIONS |     |                               |         |     |      |
|-----------|-----|-------------------------------|---------|-----|------|
| REV       | ECO | DESCRIPTION                   | DATE    | BY  | APPR |
| A7        | -   | WIRE RANGE 20AWG WAS 18-20AWG | 12FEB19 | JAH | DH   |



NOTES: UNLESS OTHERWISE SPECIFIED

- MATERIAL: COPPER ALLOY
- PLATING: SEE PART NUMBER CHART
- CONTACT SIZE: 20
- SPECIFICATIONS:
  - 4.1 CURRENT RATING: 7.5 AMPS
  - 4.2 CONTACT MILLIVOLT DROP: 60 MILLIVOLT DROP @ 7.5 AMP TEST CURRENT.
  - 4.3 RoHS COMPLIANT
- RECOMMENDED WIRE RANGE: 20 AWG
- AVAILABLE HAND CRIMPER: CA-5D12
- ALL DIMENSIONS ARE FOR REFERENCE USE ONLY

| PART NUMBER CHART |                |
|-------------------|----------------|
| PLATING           | PART NUMBER    |
| GOLD              | AT62-201-2031  |
| NICKEL            | AT62-201-20141 |

| SEE PART NUMBER CHART |             |
|-----------------------|-------------|
| PART NUMBER           | DESCRIPTION |
|                       | ITEM        |

| QUANTITY   | MATERIALS LIST   |             |
|--|--|-------------|
| <small>UNLESS OTHERWISE SPECIFIED</small><br>1) All dimensions are in metric(mm).<br>2) Tolerances are as follows:<br>1 PL DEC ±0.30<br>2 PL DEC ±0.15<br>3 PL DEC ±0.08<br>Fractions ±1/64<br>Angles ±1°<br>3) Note reference = | <b>SIGNATURES</b>  | <b>DATE</b> |
|  | DRAWN: Brook   | 03JAN19     |
|  | CHECKED: Orion   | 03JAN19     |
|  | ENGINEER:  |             |
| MATERIAL SPECIFICATIONS:   | APPROVAL: Tommy  | 03JAN19     |
|  | CUSTOMER:  |             |
| PROCESS SPECIFICATIONS:  | THIS DRAWING IS SUPPLIED FOR INFORMATION ONLY. DESIGN FEATURES, SPECIFICATIONS AND PERFORMANCE DATA SHOWN HEREON ARE THE PROPERTY OF THE AMPHENOL CORPORATION. NO RIGHTS OF REPRODUCTION ARE IMPLIED. ALL DIMENSIONS ARE SUBJECT TO NORMAL MANUFACTURING VARIATIONS. |             |
| NEXT ASSY:   |  |             |

# Amphenol

Sine Systems - www.amphenol-sine.com  
 44724 Morley Drive  
 Clinton Township, MI 48036

|             |      |                |          |
|-------------|------|----------------|----------|
| SIZE        | TYPE | DWG NO:        | REVISION |
| A           | C-   | AT62-201-20XXX | A7       |
| SCALE: NONE |      | SHEET 1 OF 1   |          |