

PCB Layout see sheet 2

dim A	3 pol	14,0
	5+7 pol	15,9
	6 + 8 pol	18,0

Number of contacts	Standard	3	4	5	5	6	7	7	8	12	14	14	19	
Contact arrangement	IEC 61076-2-106	03-a	04-a	05-a	05-b	06-a	07-a	07-b	08-a	12-a	14-a	14-b	19-a	
Contact arrangement	IEC 60130-9 ⁿ	yes		no		yes		no		no				
Rated voltage ²⁾	IEC 60664-1	300 V (100 V)		300 V (63 V)		100 V (32 V)		300 V (63 V)		100 V (32 V)		150 V (32 V) 60 V (32 V)		
Rated voltage	UL 1977	250V								60V				
Rated impulse withstand voltage ²⁾	IEC 60664-1	1500 V (1500 V)		1200 V (800 V)		1500 V (1500 V)		1200 V (800 V)						
Pollution degree ²⁾	IEC 60664-1	1 (2)												
Installation category	IEC 60664-1	I												
Insulation group	IEC 60664-1	II, 400 ≤ CTI < 600												
Current rating	IEC 60512-5-2 UL 1977	10A/+40°C			7A/+40°C						3A/+40°C			
Insulation resistance	IEC 60512-3-1	>10 ¹⁰ Ohm ³⁾												
Contact resistance	IEC 60512-2-1	<5mOhm												
Climatic category	IEC 60668-1	40 / 100 / 56												
Temperatur range	IEC 60668-1	-40°C...+100°C / -40°F...+212°F												
IP degree	IEC 60529	IP 40												
Insertion and withdrawal force	IEC 60512-13-2	25N	30N	35N	35N	50N	55N	55N	60N	50N	50N	50N	60N	
mechanical operation	IEC 60512-9-1	Silver ≥500 mating cycles / Gold ≥1000 mating cycles												
housing material		zinc die cast, nickel plated												
dielectric material		thermoplastic												
contacts		silver plated												
termination technique		solder												
wire gauge		n.a.						n.a.						
flamability		UL 94 V0												
locking system		bayonet locking outside (mateable with locking inside)												

¹⁾ Edition 2000-05
²⁾ values in brackets are according to DIN EN 61076-2-106
³⁾ under operating conditions >10⁸ Ohm
 Do not connect or disconnect under load Metal housing parts shall be securely incorporated to protected ground
 Remark for gold plated contacts:
 In order to avoid brittle inter-metallic connections, gold plated terminals have to be tin-plated in the solder area.
 All technical data have been measured in a laboratory environment and can be different during practical usage of the product. Any product information is for descriptive usage only and not legally binding, particularly the information does not constitute or provide any legal guaranties ("Beschaffensgarantie" or "Haltbarkeitsgarantie").

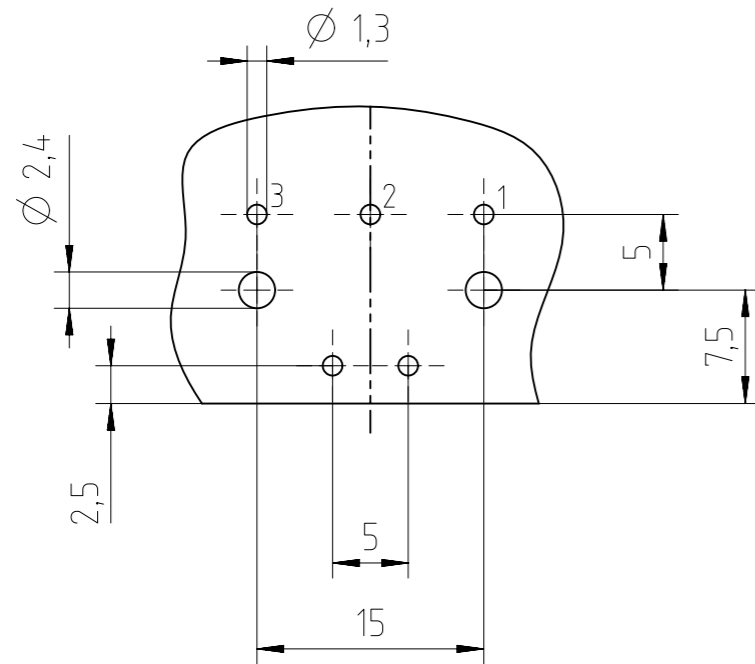
	19 (19-a)	-
	14 (14-b)	-
	14 (14-a)	-
	12 (12-a)	-
	8 (08-a)	T 3527 900 U
	7 (07-b)	T 3447 900 U
	7 (07-a)	-
	6 (06-a)	-
	5 (05-b)	T 3397 900 U
	5 (05-a)	-
	4 (04-a)	-
	3 (03-a)	T 3277 900 U
Contact arrangement View on mating side	Number of contacts (Contact arrangement acc. IEC 61076-2-106)	Part number-Ag

Gewicht (errechnet) / Calc WT: 0,014 kg	Zul. Abw./Tolerances:	Maßstab / Scale: 2:1;1:1	A3
Prüfmaß / Testdimension	ISO 2768-c	CUSTOMER DRAWING	
Teileindex / Partindexnumber:	Gez. 14.09.2017	Gerätedose	
Bagatelle change: 04.03.2022 MCARLE	Drawn AZN_NPFEIFFE	Female receptacle	
	Status Released		
	Gepr. 04.03.2022		
	Checked MBERTSCH		
	Amphenol Tuchel Industrial GmbH	M GB T 3XX7 900 U	Blatt/Sheet 1
01 202200022	03.03.2022 MCARLE	Ers. f. l. Replacement for:	2 Bl.
Index	Änderung/Description	Datum/Date	Name

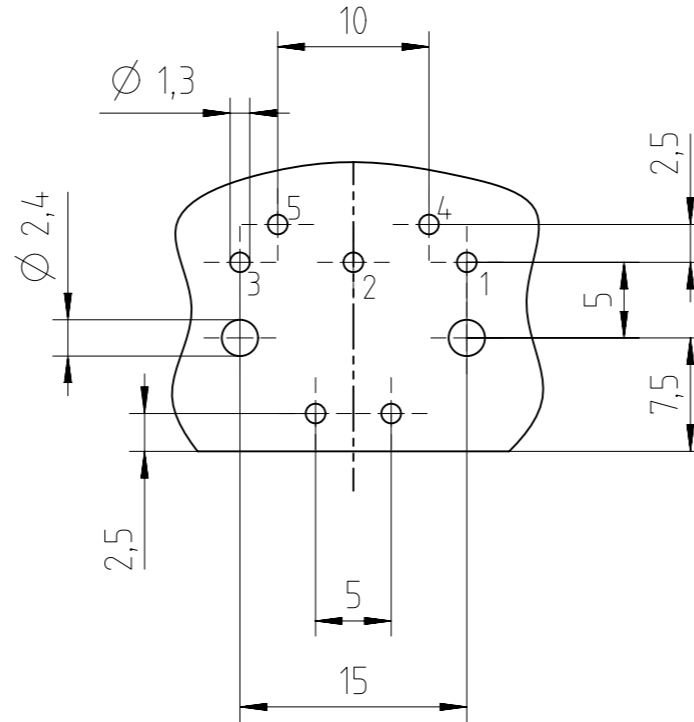
Weitergabe sowie Vervielfältigung dieser Unterlage, Verwertung und Mitteilung ihres Inhalts nicht gestattet, soweit nicht ausdrücklich zugestanden. Zuwiderhandlungen verpflichten zu Schadensersatz. Alle Rechte für den Fall der Patenterteilung oder Gebrauchsmuster-Eintragung vorbehalten.

FAI2017-001089

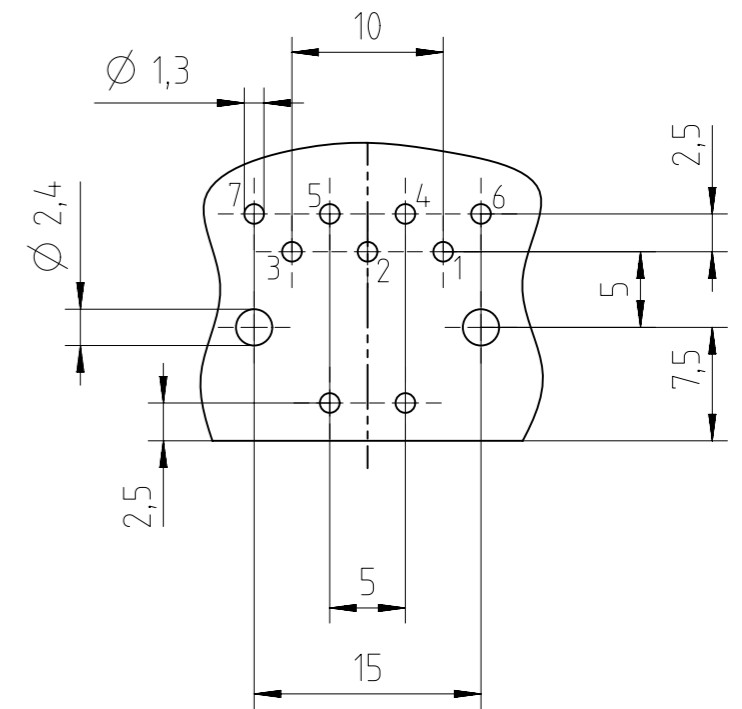
3 Pol



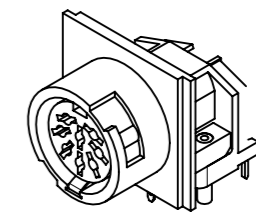
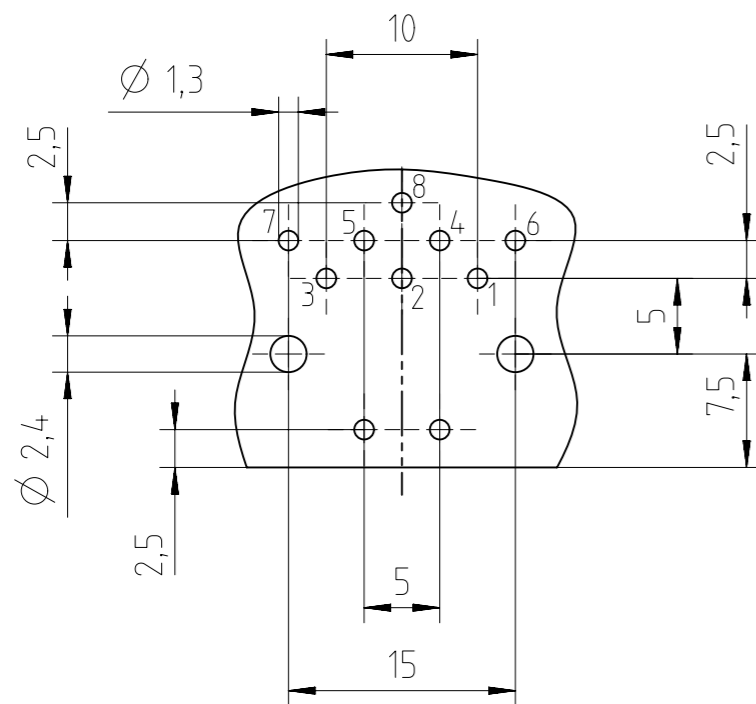
5 Pol Stereo



7 Pol



8 Pol



M 1:1

Gewicht (errechnet) / Calc WT: 0,014 kg		Zul. Abw./Tolerances:		Maßstab / Scale: 2:1;1:1	A3	
Prüfmaß / Testdimension		ISO 2768-c		CUSTOMER DRAWING		
Teileindex / Partindexnumber:				Gerätedose		
Bagatelle change: 04.03.2022 MCARLE		Gez. 14.09.2017		Female receptacle		
		Drawn AZN_NPFEIFFE				
		Status Released				
		Gepr. 04.03.2022				
		Checked MBERTSCH				
		Amphenol Tuchel Industrial GmbH		M GB T 3XX7 900 U		Blatt / Sheet 2
01	202200022	03.03.2022	MCARLE	Ers. f. / Replacement for:		2 Bl.
Index	Änderung / Description	Datum / Date	Name			

Copying of this document and giving it to others and the use or communication of the contents thereof, are forbidden without express authority. Offenders are liable to the payment of damages. All rights are reserved in the event of the grant of a patent or the registration of the utility model or design.

Weitergabe sowie Vervielfältigung dieser Unterlage, Verwertung und Mitteilung ihres Inhalts nicht gestattet, soweit nicht ausdrücklich zugestanden. Zuwiderhandlungen verpflichten zu Schadenersatz. Alle Rechte für den Fall der Patenterteilung oder Gebrauchsmuster-Eintragung vorbehalten.

FAI2017-001089
 NXM-V01