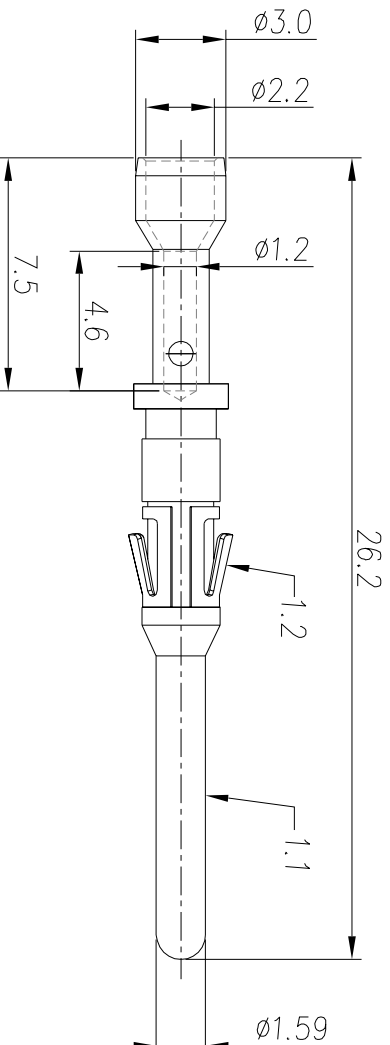


REVISIONS					
REV	ECO	DESCRIPTION	DATE	BY	APPR
B1	-	RELEASED DRAWING	JUN-18-2014	BEN	TOMMY



P/N	CONTACT PLATING(MATING AREA)
MP20M23T	TIN PLATING OVER NICKEL
MP20M23S	SILVER PLATING OVER NICKEL
MP20M23F	GOLD FLASH PLATING OVER NICKEL
MP20M23G10	10µ" GOLD PLATING OVER NICKEL
MP20M23G15	15µ" GOLD PLATING OVER NICKEL
MP20M23G30	30µ" GOLD PLATING OVER NICKEL

- NOTES : ( UNLESS OTHERWISE SPECIFIED )
- MATERIAL :
    - CONTACT BODY : COPPER ALLOY.
    - POSITIONING CLIP : COPPER ALLOY.
  - SPECIFICATIONS :
    - CURRENT RATING : 13A(MAX).
    - TERMINATION TYPE : CRIMPING.
    - WIRE RANGE : 20~22AWG.
    - SUITABLE SOCKET TYPE : MS20M23XX.
  - ROHS COMPLIANT.
  - ALL DIMENSIONS ARE FOR REFERENCE USE ONLY.

QUANTITY	PART NUMBER	DESCRIPTION	ITER
		<b>MATERIALS LIST</b>	
UNLESS OTHERWISE SPECIFIED			
1) ALL DIMENSIONS ARE IN MILLIMETERS.			
2) TOLERANCES ARE AS SHOWN.			
3) Note reference =			
DRAWN: BBI		DATE: JUN-18-14	
CHECKED: FREDERICK S. VIDA		ENGINEER: FREDERICK S. VIDA	
APPROVAL: _____		CUSTOMER: _____	
THIS DRAWING IS SUPPLIED FOR SPECIFICATIONS AND PERFORMANCE DATA. THE DRAWING IS NOT TO BE USED FOR REPRODUCTION OR REPRODUCTION IN ANY MANNER. ALL MANUFACTURING VARIATIONS.			
SCALE: NONE		SIZE: B	REVISION: B1
DRAWING: MP20M23XX		ECO-MATE PIN CONTACT MACHINE: 20-22AWG, SIZE 16	
Sine Systems - www.amphenol-sine.com 44724 Morley Drive Clinton Township, MI 48038			