

## PowerLok™ 插座安装说明 / PowerLok™ Receptacle Installation Instructions

### PowerLok™ 插座安装面板要求

### PowerLok™ Receptacle Install Panel Requirements

1. 面板厚度需依照如下表格

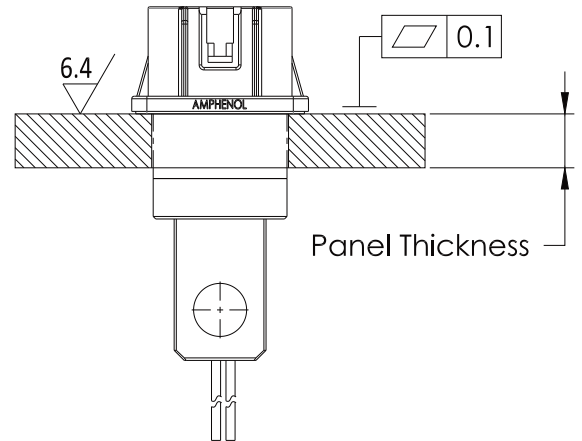
1. Panel Thickness should According to bellow Table

Series	Max. Panel Thickness
120 Series	7.2mm
300 Series	12mm
500 Series	17mm

2. 面板与插座接触一起之间的垫片应符合要求:

2. The Gasket between Panel and Receptacle should achieve bellow Requirements:

- 平面度应小于或等于0.1毫米
- Planeness should be less than or equal to 0.1mm
- 表面粗糙度应为6.4或更好
- Surfacedness should be 6.4 or Better



### PowerLok™ 插座测试要求

### PowerLok™ Receptacle Testing Requirements



禁止直接接触测试

No touching Pin to test



请插上插头进行测试

Please Plug in then Test

### PowerLok™ 螺丝最大扭紧扭矩

### PowerLok™ MAX Tightening Torque

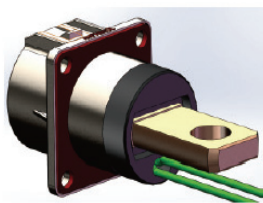
单芯/ONE POS

多芯/Multi POS

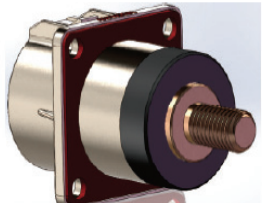
螺纹 Thread	螺丝最大扭紧扭矩 MAX Tightening
M3	0.86N·M
M4	2.0 N·M
M6	6.9N·M

## PowerLok 连接器插座安装规范

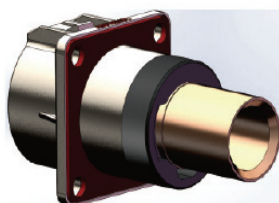
## PowerLok Receptacle Installation Specification



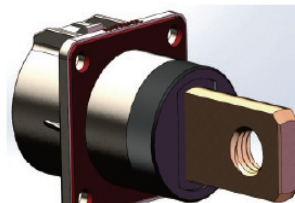
1 POS Receptacle  
(Busbar Lug)



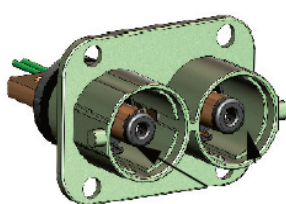
1 POS Receptacle  
(Thread Pin)



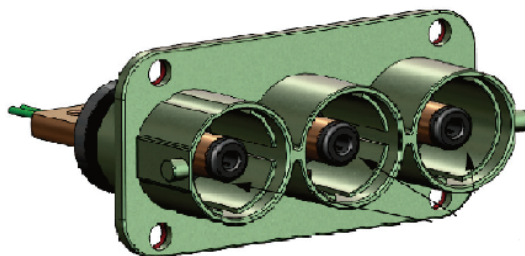
1 POS Receptacle  
(Tubular Lug)



1 POS Receptacle  
(90 Degree Busbar Lug)



2POS Receptacle



3POS Receptacle

### 安装步骤 Installation Steps

- ◆1、根据下表一，选择对应安装扭力

Apply proper torque according to table.1 below.

表一 table.1

安装扭力参数表 Install Torsion Data	
螺丝规格 Screw Standard	装配扭力 ( N·M ) Install Torque
M6	3.6~4.4
M8	7.2~8.8
M10	17.1~20.9

- ◆2、选择合适的安装工具。Choose proper install tools.

气(电)动扭力工具  
pneumatic (electric) powered torque tools



插座安装辅助治具(表二)

receptacle auxiliary installation fixture(Table.2)

数显手动扭力工具  
Digital display hand torque tools



表二 table.2

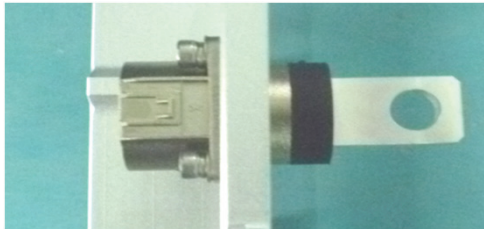


插座Receptacle	编号 Number
120A	F0310
300A	F0284
400A	F0400
500A	F0401

## PowerLok 连接器插座安装规范

## PowerLok Receptacle Installation Specification

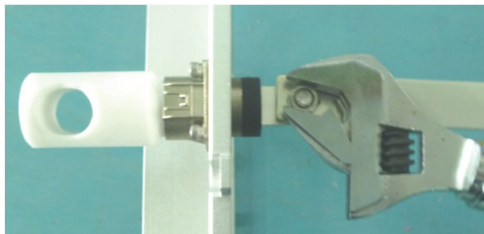
### ◆3、产品安装 Product Installation



**a、** 将插座固定在安装板上  
Fixed receptacle on the mounting plate



**b、** 根据表一，设置扭力扳手的控制上限值  
Setting upper limit torque according to table.1



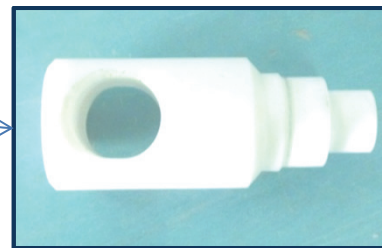
**c、** 根据表二，取安装辅助治具插入插座中后平行扭紧螺丝  
Fastening screws after installation fixture insert the receptacle according to table.2.



**d、** 听到报警声，停止扭动扳手。  
Stop fastening screw when it alarms.



**e、** 取出安装辅助治具后完成安装  
Complete installation after taking out the fixture .



例如：PIN弯曲变形，不可接受  
pin bended is not acceptable.

**f、** 检查胶料是否破损，检查PIN是否弯曲变形  
Any damage on plastic is not allowed, any deformation on Pin is not allowed.