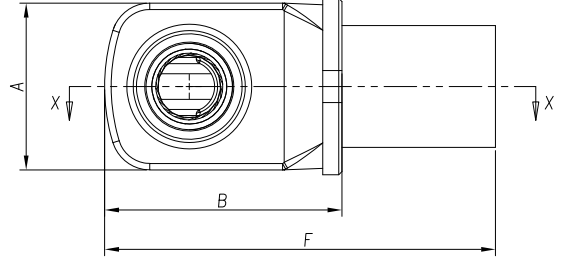
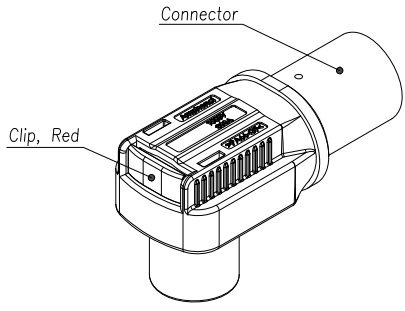


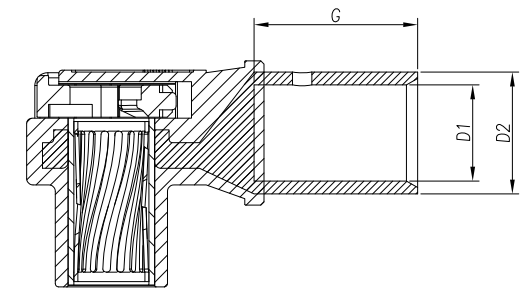
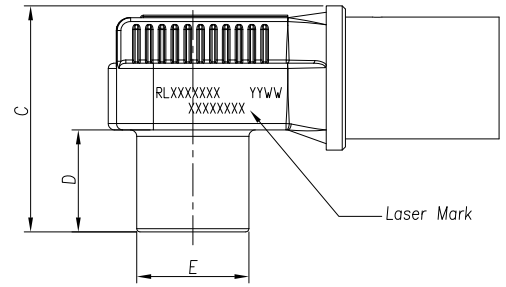
# CUSTOMER DRAWING

REVISIONS					
REV	ECNC#	DESCRIPTION	DATE	BY	APPR
A	--	INITIAL RELEASE	02/24/14	DH	EC
B	--	Add "F" Dimension	03/19/14	DH	EC
C	--	Add RadLok14.0	04/01/15	VF	EC
D	--	Add RLO140-135	06/19/15	JG	EC
E	151203	Correction of Dim	12/15/15	JG	GX
F	170222	Add View X-X	02/22/17	YK	TS
G	--	Add 5.7 series 16mm2.	01/11/18	KW	JG
H	210108	Add UL Logo of RLO-0801-50 And RLO-0361-10	01/18/21	DL	JL
I	--	Add laser printing requirements	03/25/22	DL	JL
J	--	Add 14.0 series 70mm2.	04/06/22	DL	JL
K	220523	Add 12.0 series 70mm2.	05/25/22	DL	JL
L	240204	Correcting incorrect dimensions	02/20/24	DL	JL

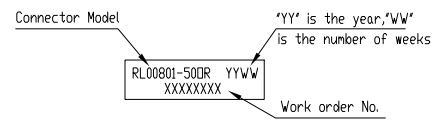


Ordering Example:

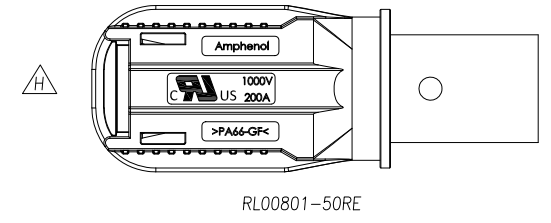
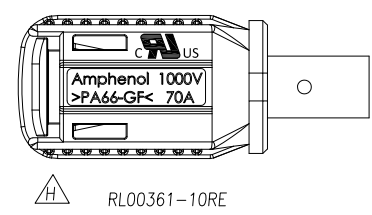
RadLok \_\_\_\_\_ RL 0 080 1 - 50 OR  
 RadLok Connector Verison \_\_\_\_\_  
 RadLok Size:  $\varnothing$ 8.0mm \_\_\_\_\_  
 Lug Type: Tubular \_\_\_\_\_  
 Cable Size: 50mm<sup>2</sup> \_\_\_\_\_  
 Connector Color: OR:Orange \_\_\_\_\_  
 RE:Red \_\_\_\_\_  
 BK:Black \_\_\_\_\_



Laser printing requirements:



View X-X



Specification													
Size (mm)	A (mm)	B (mm)	C (mm)	D (mm)	E (mm)	F (mm)	G (mm)	D1 (mm)	D2 (mm)	Wire Size (mm <sup>2</sup> )	Current(A)	Catalog P/N ( ) For Color	UL listed (E510354)
3.6	15.5	27.0	18.3	7.3	8.1	38.0	11.0	5.0	6.7	10	70	RL00361-10( )	YES
5.7	18.5	33.0	23.8	9.4	11.5	47.7	19.0	5.5	8.5	16	90	RL00571-16( )	NO
						47.7	19.0	7.2	9.5	25	120	RL00571-25( )	NO
8.0	21.6	39.6	27.7	11.8	14.6	56.0	22.0	9.2	11.5	35	150	RL00801-35( )	NO
						58.0	24.0	11.0	14.2	50	200	RL00801-50( )	YES
						58.9	22.0	11.0	13.9	50	200	RL01001-50( )	NO
10.0	26.0	37.0	35.3	15.9	17.5	60.9	24.0	12.0	15.5	70	250	RL01001-70( )	NO
	31.0					60.9	25.5	15.0	19.0	95	300	RL01001-95( )	NO
						66.5	24.0	12.8	16.2	70	200	RL01201-70( )	NO
12.0	33.0	44.5	37.2	15.0	20.0	70.5	28.0	17.0	21.2	120	400	RL01201-120( )	NO
						28.0	12.5	16.5	70	300	RL01401-70( )	NO	
							28.0	18.2	23.5	135	450	RL01401-135( )	NO
14.0	42	55	48.5	22.3	23.0	80	28.0	19.0	24.0	150	500	RL01401-150( )	NO

**AMPHENOL**

**Amphenol Technical Products International GZ**

第三角投影 THIRD ANGLE PROJECTION	页面 SHEET	幅面 SIZE	版次 REV.	比例 SCALE.	PART NAME: <b>RADLOK® Connector Tubular Lug Verison</b>	
	1 OF 2	A3	L		DWG NO: See Specification	
签名 SIGNATURE	日期 DATE	UNLESS OTHERWISE SPECIFIED 1) All dimensions are in metric(mm). 2) Tolerances are as follows: 0 PL DEC ±1.00 1 PL DEC ±0.50 2 PL DEC ±0.20			DWG NO: See Specification	
制图 DRAWN	DL	02/20/2024				CUST PART #: N/A
审核 CHECKED	JG	02/20/2024				CUST REV. N/A
批准 APPROVAL	JL	02/20/2024	Angles ±1°			N/A

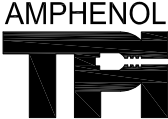
THIS DRAWING IS SUPPLIED FOR INFORMATION ONLY. DESIGN FEATURES, SPECIFICATIONS AND PERFORMANCE DATA SHOWN HEREON ARE THE PROPERTY OF THE AMPHENOL CORPORATION. NO RIGHTS OF REPRODUCTION ARE IMPLIED. ALL DIMENSIONS ARE SUBJECT TO NORMAL MANUFACTURING VARIATIONS.

CUSTOMER DRAWING

REVISIONS					
REV	ECNC#	DESCRIPTION	DATE	BY	APPR
A	--	INITIAL RELEASE	02/24/14	DH	EC
B	--	Add "F" Dimension	03/19/14	DH	EC
C	--	Add RadLok14.0	04/01/15	VF	EC
D	--	Add RLO140-135	06/19/15	JG	EC
E	151203	Correction of Dim	12/15/15	JG	GX
F	170222	Add View X-X	02/22/17	YK	TS
G	--	Add 5.7 series 16mm2.	01/11/18	KW	JG
H	210108	Add UL Logo of RLO-0801-50 And RLO-0361-10	01/18/21	DL	JL
I	--	Add laser printing requirements	03/25/22	DL	JL
J	--	Add 14.0 series 70mm2.	04/06/22	DL	JL
K	220523	Add 12.0 series 70mm2.	05/25/22	DL	JL
L	240204	Correcting incorrect dimensions	02/20/24	DL	JL

Table						
R4 Size	Part Number					
	Color:Orange		Color:Black		Color:Red	
	Catalog P/N	GEC P/N	Catalog P/N	GEC P/N	Catalog P/N	GEC P/N
3.6mm	RL00361-100R	AC-HA000222	RL00361-10BK	AC-HA000272	RL00361-10RE	AC-HA000422
5.7mm	RL00571-160R	AC-HA000223	RL00571-16BK	AC-HA000273	RL00571-16RE	AC-HA000423
	RL00571-250R	AC-HA000224	RL00571-25BK	AC-HA000274	RL00571-25RE	AC-HA000424
8.0mm	RL00801-350R	AC-HA000225	RL00801-35BK	AC-HA000275	RL00801-35RE	AC-HA000425
	RL00801-500R	AC-HA000226	RL00801-50BK	AC-HA000276	RL00801-50RE	AC-HA000426
10.0mm	RL01001-500R	AC-HA000229	RL01001-50BK	AC-HA000279	RL01001-50RE	AC-HA000429
	RL01001-700R	AC-HA000230	RL01001-70BK	AC-HA000280	RL01001-70RE	AC-HA000430
	RL01001-950R	AC-HA000231	RL01001-95BK	AC-HA000281	RL01001-95RE	AC-HA000431
12.0mm	RL01201-700R	AC-HA012722	RL01201-70BK	AC-HA011382	RL01201-70RE	AC-HA011384
	RL01201-1200R	AC-HA000232	RL01201-120BK	AC-HA000282	RL01201-120RE	AC-HA000432
14.0mm	RL01401-700R	AC-HA004633	RL01401-70BK	AC-HA004634	RL01401-70RE	AC-HA004635
	RL01401-1350R	AC-HA004330	RL01401-135BK	AC-HA004331	RL01401-135RE	AC-HA004332
	RL01401-1500R	AC-HA000233	RL01401-150BK	AC-HA000283	RL01401-150RE	AC-HA000433

THIS DRAWING IS SUPPLIED FOR INFORMATION ONLY. DESIGN FEATURES, SPECIFICATIONS AND PERFORMANCE DATA SHOWN HEREON ARE THE PROPERTY OF THE AMPHENOL CORPORATION. NO RIGHTS OF REPRODUCTION ARE IMPLIED. ALL DIMENSIONS ARE SUBJECT TO NORMAL MANUFACTURING VARIATIONS.

		<b>Amphenol Technical Products International GZ</b>				PART NAME: RADLOK® Connector Tubular Lug Verison	
		第三角投影 THIRD ANGLE PROJECTION	页面 SHEET	幅面 SIZE	版次 REV.	比例 SCALE.	DWG NO: See Table
签名 SIGNATURE		日期 DATE		UNLESS OTHERWISE SPECIFIED 1) All dimensions are in metric(mm). 2) Tolerances are as follows: 0 PL DEC ±1.00 1 PL DEC ±0.50 2 PL DEC ±0.20		CUST PART #: N/A	
制图 DRAWN	DL	02/20/2024	审核 CHECKED	JG	02/20/2024	批准 APPROVAL	JL

Angles ±1°