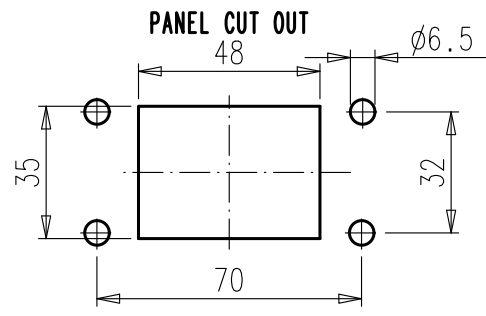
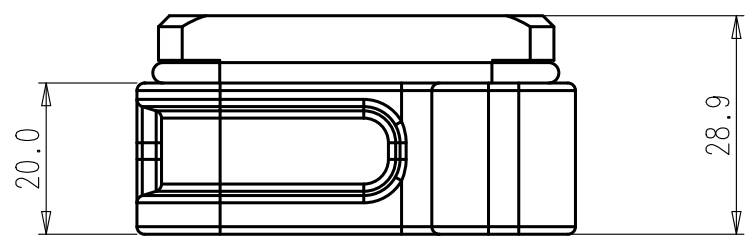
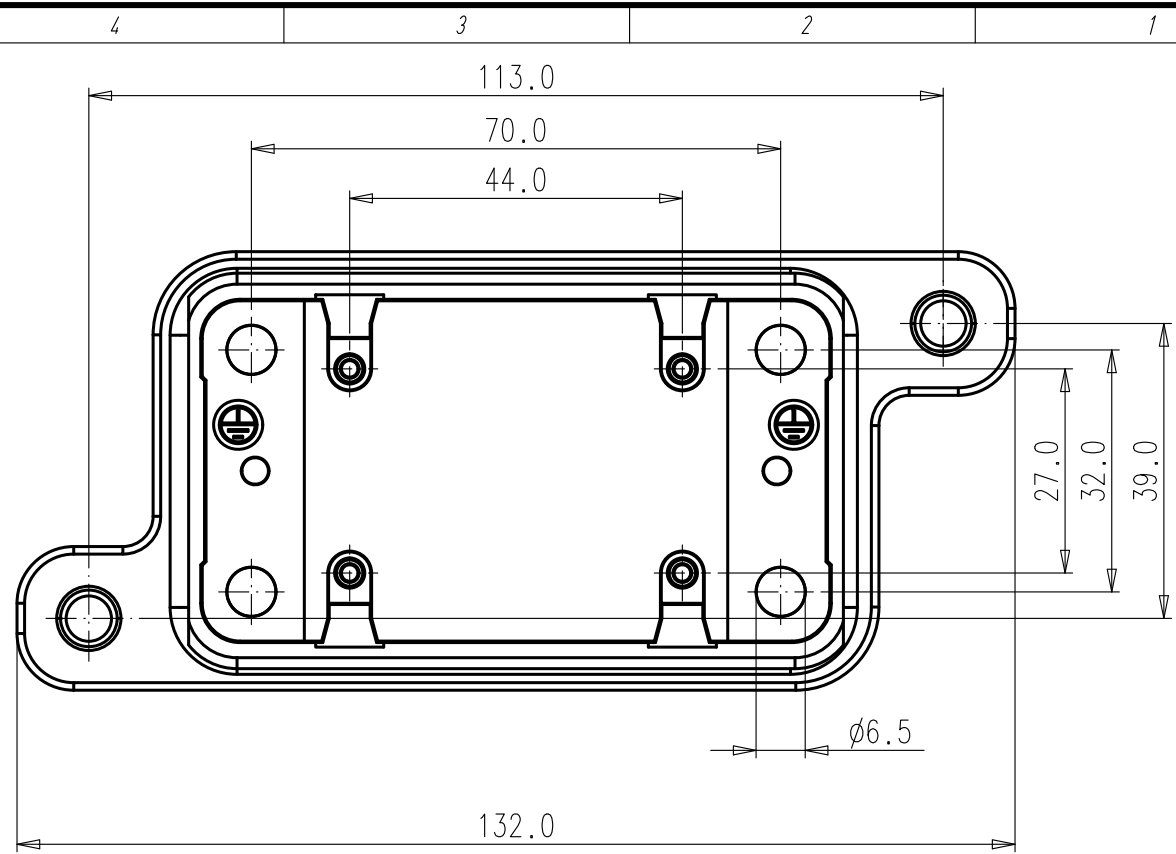


Copying of this document and giving it to others and the use or communication of the contents thereof, are forbidden without express authority. Offenders are liable to the payment of damages. All rights are reserved in the event of the grant of a patent or the registration of the utility model or design.

Weitergabe sowie Vervielfältigung dieser Unterlage, Verwertung und Mitteilung ihres Inhalts nicht gestattet, soweit nicht ausdrücklich zugestanden. Zuwiderhandlungen verpflichten zu Schadenersatz. Alle Rechte für den Fall der Patenterteilung oder Gebrauchsmuster-Eintragung vorbehalten.



All technical data have been measured in a laboratory environment and can be different during practical usage of the product. Any product information is for descriptive usage only and not legally binding; particularly the information does not constitute or provide any legal guaranties ("Beschaffheitsgarantie" or "Haltbarkeitsgarantie").

Parts according to directive 2002/95/EG (RoHS)

Gewicht (errechnet)/ Calc WT: 150		9	Zul. Abw./Tolerances:		Maßstab/Scale 1:1	A4	
Prüfmaß/Testdimension			 DIN 6784		CUSTOMER DRAWING HOUSING BULKHEAD MOUNTING IP68, DESIGN SIZE 6		
Teileindex Part index number							
			13	Datum/Date	Name	M C146 68F006 001 1 U	
			Gez.	27.05.	Aaron.Liu		
			Drawn				
			Gepr.				
			Checked			Blatt/Sheet 1 1 Bl.	
01	201100639	27.05.13	AL	Amphenol-Tuchel Electronics GmbH			
Index	Änderung/Description	Datum/Date	Name	Ers. f./Similar to: S J 201000063 (102)			