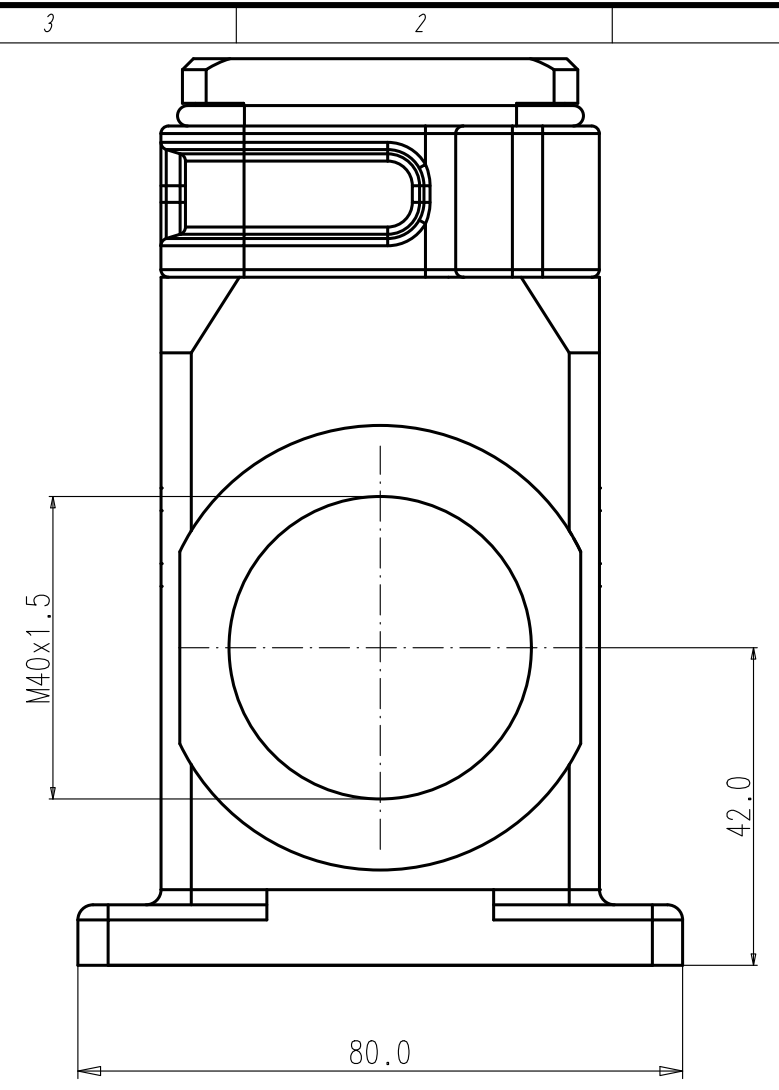
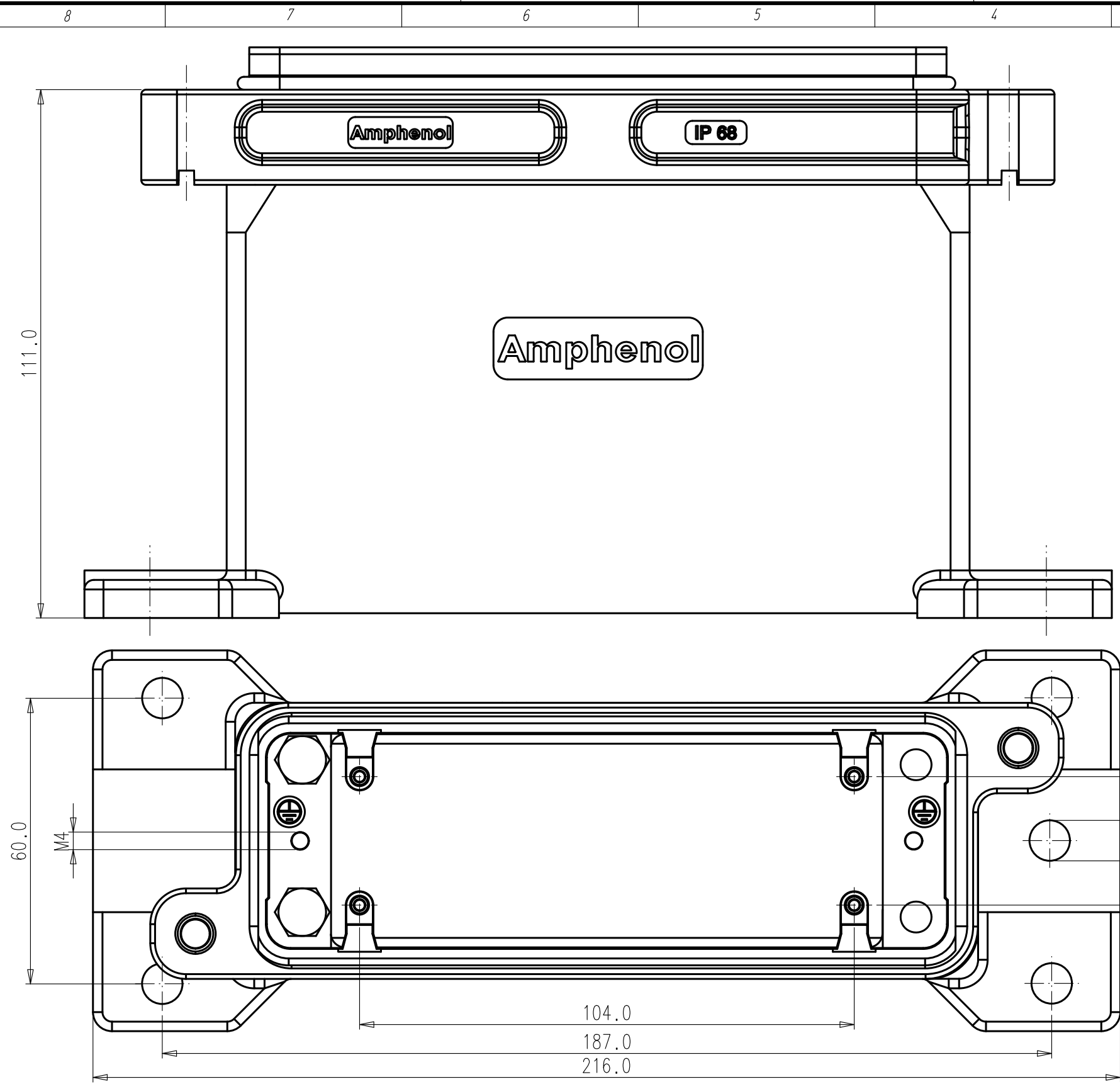


Copying of this document and giving it to others and the use or communication of the contents thereof, are forbidden without express authority. Offenders are liable to the payment of damages. All rights are reserved in the event of the grant of a patent or the registration of the utility model or design.

Weitergabe sowie Vervielfältigung dieser Unterlage, Verwertung und Mitteilung ihres Inhalts nicht gestattet, soweit nicht ausdrücklich zugestanden. Zuwiderhandlungen verpflichten zu Schadenersatz. Alle Rechte für den Fall der Patenterteilung oder Gebrauchsmuster-Eintragung vorbehalten.



All technical data have been measured in a laboratory environment and can be different during practical usage of the product. Any product information is for descriptive usage only and not legally binding; particularly the information does not constitute or provide any legal guaranties (*Beschaffenheitsgarantie* or *Haltbarkeitsgarantie*).

Parts according to directive 2002/95/EG (RoHS)

Gewicht (errechnet) / Calc WT: 9		Zul. Abw. / Tolerances:		Maßstab / Scale 1:1		A3	
<input type="checkbox"/> Prüfmäß / Testdimension Teileindex Part index number		<input type="checkbox"/> DIN 6784		CUSTOMER DRAWING			
		12	Datum / Date	Name		HOUSING SURFACE MOUNTING IP68, DESIGN SIZE 24	
		Gez.	21.11.	Aaron.Liu			
		Gepr.					
		Checked					
		Amphenol-Tuchel Electronics GmbH		M C146 68N024 501 2 U		Blatt / Sheet 1 / 1 Bl.	
01	201100639	21.11.12	AL	Ers. f. / Similar to:			
Index	Änderung / Description	Datum / Date	Name				